

FETCO®

TRUSTED | RELIABLE | QUALITY



2015

EQUIPMENT & ACCESSORIES
CATALOG

▶ Selecting Right Equipment

The most important factor in selecting the right equipment is to understand the amount of cups per hour (CPH) your operation is expecting to dispense at each "service station" and match it to the model most capable of effectively producing that volume.

Coffee Brewers

Approximate Cups Per Hour*

XTS™ AND EXTRACTOR® Series

		8 OZ.	12 OZ.	16 OZ.	20 OZ.
CBS-2131	Single Station 3L to 1.0 Gallon	123	82	62	49
CBS-2132	Twin Station 3L to 1.0 Gallon	224	149	112	90
CBS-2141	Single Station 1.0 Gallon	184	123	92	74
CBS-2142	Twin Station 1.0 Gallon	224	149	112	90
CBS-2151	Single Station 1.5 Gallon	248	165	124	99
CBS-2152	Twin Station 1.5 Gallon	614	410	307	246
CBS-2052e	Twin Station 2.0 Gallon	704	469	352	282
CBS-2061e	Single Station 3.0 Gallon	472	315	236	189
CBS-2062e	Twin Station 3.0 Gallon	944	629	472	378

Handle Operated Series

CBS-51H-15	Single Station 1.5 Gallon	238	159	119	95
CBS-52H-15	Twin Station 1.5 Gallon	475	317	238	190
CBS-52H-20	Twin Station 2.0 Gallon	475	317	238	190
CBS-61H	Single Station 3.0 Gallon	475	317	238	190
CBS-62H	Twin Station 3.0 Gallon	846	576	432	346

High Volume Series

CBS-71A / 71AC	Single Station 6.0 Gallon (Stationary / Mobile Cart)	480	320	240	192
CBS-72A / 72AC	Twin Station 6.0 Gallon (Stationary / Mobile Cart)	960	640	480	384

IP44 Maritime Series

IP44-52H-15	Twin Station 1.5 Gallon	475	317	238	190
IP44-52H-20	Twin Station 2.0 Gallon	475	317	238	190
IP44-62H	Twin Station 3.0 Gallon	864	576	432	346

Tea Brewer

XTS™ Tea Brewer

TBS-2121	Twin Station 3.5 Gallon	288	192	144	115
----------	-------------------------	-----	-----	-----	-----

Hot Water Dispensers

Digital Operation

HWD-2102	2.0 Gallon - Single Temperature	131	87	62	52
HWD-2105	5.0 Gallon - Single Temperature	125	83	62	50
HWD-2110	10.0 Gallon - Single Temperature	195	130	98	78
HWD-2105TOD	5.0 Gallon - Temperature On Demand	125	83	62	50
HWD-2110TOD	10.0 Gallon - Temperature On Demand	195	130	98	78

Pull Faucet Operation

HWB-2105	5.0 Gallon	112	75	56	45
HWB-2110	10.0 Gallon	240	160	120	96
HWB-15	15.0 Gallon	356	237	178	142
HWB-25	25.0 Gallon	960	640	480	384

IP44 Maritime Series

IP44-HWB-5	5.0 Gallon	112	75	56	45
IP44-HWB-10	10.0 Gallon	240	160	120	96

*Approximate cups per hour information based on default factory settings with the highest possible power configuration.

▶ 3	Coffee Brewing Systems	
	XTS™ AND EXTRACTOR® Coffee Brewing Series	▶ 5
	Handle Operated Series	▶ 19
	High Volume Series	▶ 25
	IP44 Maritime Series	▶ 30
▶ 16	Tea Brewer	
	XTS™ Tea Brewer	▶ 18
▶ 35	Hot Water Dispensers	
	Digital Operation	▶ 37
	Pull Faucet Operation	▶ 40
▶ 41	Coffee Grinders	
	Coffee Grinders – All Models	▶ 42
▶ 43	LUXUS® Thermal Dispensers	
	Tabletop Service and Airtots	▶ 44
	L3S Satellite Series	▶ 45
	L3D Satellite Series	▶ 46
	TPD Satellite Series and Iced Tea	▶ 47
	LBD High Volume Series	▶ 48
▶ 49	Accessories & Options	
	Paper Coffee Filter Guide	▶ 50
	Water Filtration System	▶ 50
	Accessories	▶ 51
	Options	▶ 52
▶ 53	Terms & Conditions	
	Terms of Sale	▶ 53
	Return Policy	▶ 54
	Warranty	▶ 55
	FetProtect® Technical Support Services	▶ 56
▶ 57	Product Index	

▶ XTS™ Series Coffee Brewers

Driven by a user-friendly touchscreen interface and intuitive software, the XTS™ series represents the next step in the evolution of FETCO's renowned EXTRACTOR brewing technology.



Perfect taste begins with a simple touch...



User-Friendly Touchscreen

Access all controls via an inviting touchscreen interface display that blends intuitive icons with dynamic time and volume data to provide instant visual feedback at any point during programming, diagnostics or the brew cycle.



Streamlined Programming, Diagnostics and Metrics

The Extractor® Touchscreen Operating System (ETOS) was engineered for quick and efficient navigation through set-up, programming, diagnostics and daily operational brewing modes.



Customizable Screens

Customize the start screen to tie your equipment and product offerings into a consistent brand message. You can also create and display individual recipe names for quick and easy access to your most used coffee blends.

Legendary Extractor® Control

Take your coffee to its peak level by unlocking the full freshness, aroma and flavor of your taste profile with the legendary EXTRACTOR® brewing technology.

Brew Volume

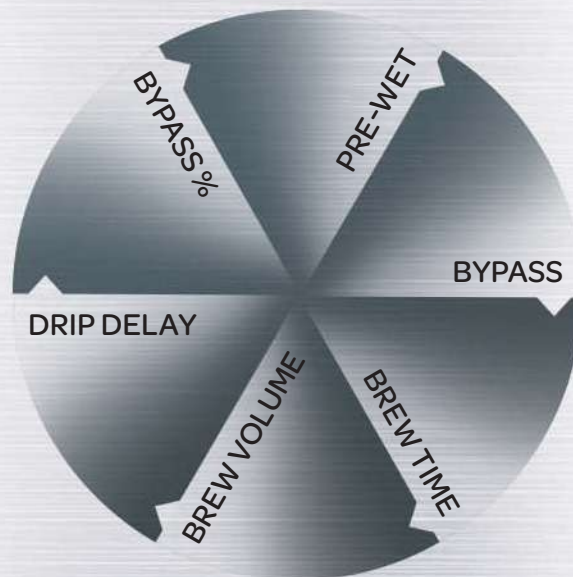
Program each separately to ensure perfectly balanced batch, no matter how much coffee you need at once.

Bypass Time and Percent

Redirects water directly into the dispenser, bypassing the coffee grounds in the brew basket to provide your custom water-to-coffee ratio.

Drip Delay

Manually set the time between the end of the brew cycle and the unlocking of the brew basket, for increased safety.



Pre-Wet Cycle

Allows you to control the length of time water is in contact with the coffee before the brew cycle to ensure optimum flavor.

Brew Time

Program each separately to ensure perfectly balanced batch, no matter how much coffee you need at once.

▶ Standard Features:

1 Touchscreen Interface

Allows for quick and easy access to brew controls.

2 Brew Basket Sensors

Automatically discontinues operation of brew cycle if basket is removed.

3 Modern Convenience

Duplicate profiles and parameters via a removable SD card.

4 Mixed Material Construction

Mixed material is attractive and comfortable in any front-of-house setting.

5 Manual Water Faucet

Safely dispenses hot water away from steam and brew basket.

6 Stainless Steel Finish

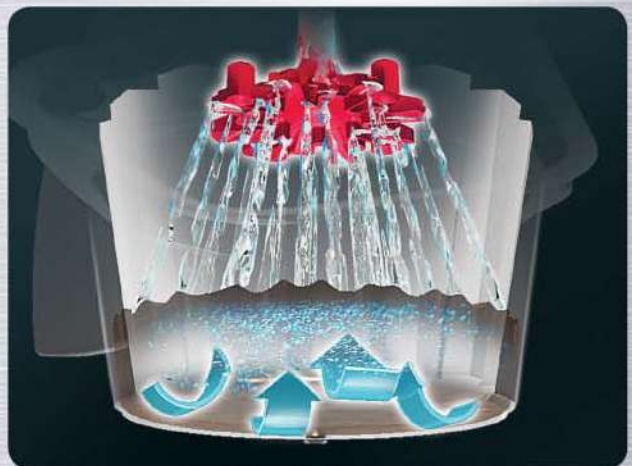
Withstands the harshest foodservice environments and is durable and easy to clean.



XTS™ SERIES

Revolutionary Cascading Spray Dome®

Exclusive to FETCO®! This unique, patented feature provides even saturation of the coffee bed for maximum flavor and aroma extraction. It resists lime build up which means fewer service calls and more time producing revenue.



Pulse Brew System

Delivers intermittent pulses of water to ensure even saturation of the coffee bed for enhanced extraction.



Features & Benefits

- 3.0 liter size provides flexibility for small- to medium-sized operations.
- Extractor® technology allows you to precisely dial-in the profile of even the most complex coffee blend to unlock its full freshness, aroma and flavor.
- User-friendly touchscreen interface display allows for quick and easy access to brew controls to quickly begin the brewing process for up to 4 separate coffee recipes and/or batch sizes.
- The brewer's low profile and small footprint make it the perfect choice for areas in which service space is at a premium – breakrooms, cafeteria countertops, lobby coffee service, etc.
- Built for flexibility and portability, vacuum-lined pump lever airpots quickly turn virtually any remote location into a hot and fresh beverage service station.
- Available in multiple power configurations to efficiently meet your cups-per-hour requirement and keep energy costs at a minimum.



Approximate Cups Per Hour



123

8oz.

82

12oz.

62

16oz.

49

20oz.

Based on maximum power setting.



Electrical Configuration

Configuration Code	Heater Config.	Voltage	Phase	Wires	KW	Electrical Connection	Max Amp Draw	Gallon/Hour
PLASTIC BASKET STAINLESS STEEL BASKET								
E213153	E213153M	1 x 1.5 kW	100-120	1	2+G	1.1-1.6	NEMA 5-15P	10.9-13.0
E213154	E213154M	1 x 1.7 kW	100-120	1	2+G	1.3-1.8	NEMA 5-15P	12.3-14.7
E213151	E213151M	1 x 2.3 kW	100-120	1	2+G	1.7-2.4	NEMA 5-20P	16.5-19.7
E213157	E213157M	1 x 3.0 kW	200-240	1	2+G	2.2-3.1	NEMA 6-15P	10.9-13.0
UNIVERSAL VOLTAGE OPTIONS								
E213171	E213171M	1 x 1.5 kW	120	1	2+G	1.6	NEMA 5-15P	13.0
Optional ⁽²⁾	Optional ⁽²⁾	2 x 1.5 kW	120/208-240	1	3+G	3.1	L1 / L2 / N+G	13.0
E213172	E213172M	1 x 1.7 kW	120	1	2+G	1.8	NEMA 5-15P	14.7
Optional ⁽²⁾	Optional ⁽²⁾	2 x 1.7 kW	120/208-240	1	3+G	3.5	L1 / L2 / N+G	14.7
E213173	E213173M	1 x 2.3 kW	120	1	2+G	2.4	NEMA 5-20P	19.7
Optional ⁽²⁾	Optional ⁽²⁾	2 x 2.3 kW	120/208-240	1	3+G	4.7	L1 / L2 / N+G	19.7

(1) Based on standard factory settings: 5.5 minute brew time; 0% prewet; 200°F water. 3 liters per batch.

(2) Sold with factory cord & plug for 120 Volt configuration. Optional user connection to a terminal block requiring L1, L2, N and ground to 120/208-240 VAC. No airpot locator for this group. User selectable for optional, dual in-series heater configuration.



Water Specification

Water Inlet	Water Pressure	Minimum Flow Rate
3/8" Male Flare Fitting	20-75 psig	1 1/2 gpm



Dimensions

Type	Height	Width	Depth	Weight	Filled Weight
Product	25 3/4"	11 3/4"	20 3/8"	29 lbs	55 lbs
Shipping	16"	23"	29"	41 lbs	–



Customize Your Brewer

Dispensers



◀ 3.0 Liter Stainless Steel Thermal Pump Lever Airpot

D041

Accessories

2 Station Airpot Rack with Drip Tray	A034
3 Station Airpot Rack with Drip Tray	A035
5 Station Airpot Rack with Drip Tray	A036
Airpot Hot Tea Infuser	A112
Drip Tray - Square	A137

Water Filtration System

Everpure® Filter System and Replacement Cartridges	See Page 50
BWT bestmax Filter System and Replacement Cartridges	See Page 50

Paper Coffee Filters

13" x 5" (500 / Case)	F002
-----------------------	------

Brew Baskets



◀ 13" x 5" Stainless Steel

B012218B1



◀ 13" x 5" Plastic w/ Brown Insert

B014218BN2



Features & Benefits

- 2 x 3.0 liter size provides flexibility for small- to medium-sized operations.
- Extractor® technology allows you to precisely dial-in the profile of even the most complex coffee blend to unlock its full freshness, aroma and flavor.
- User-friendly touchscreen interface display allows for quick and easy access to brew controls to quickly begin the brewing process for up to 8 separate coffee recipes and/or batch sizes.
- Twin station configuration provides the flexibility of brewing two different recipes or into two different types of dispensers at the same time - or both!
- Built for flexibility and portability, vacuum-lined pump lever airpots quickly turn virtually any remote location into a hot and fresh beverage service station.



Approximate Cups Per Hour



+



224
8oz.

149
12oz.

112
16oz.

90
20oz.

Based on maximum power setting.



Electrical Configuration

Configuration Code		Heater Config.	Voltage	Phase	Wires	KW	Electrical Connection	Max Amp Draw	Gallon/Hour
PLASTIC BASKET	STAINLESS STEEL BASKET								
E213251	E213251M	2 x 2.3 kW	200-240	1	2+G	3.3-4.7	Terminal Block	16.5-19.7	11.5 ⁽¹⁾
E213252	E213252M	2 x 3.0 kW	200-240	1	2+G	4.2-6.1	Terminal Block	21.3-25.5	14.0 ⁽¹⁾

(1) Based on standard factory settings: 5.5 minute brew time; 0% prewet; 200°F water. 3 liters per batch.



Water Specification

Water Inlet	Water Pressure	Minimum Flow Rate
3/8" Male Flare Fitting	20-75 psig	1 1/2 gpm



Dimensions

Type	Height	Width	Depth	Weight	Filled Weight
Product	25 3/4"	19 3/4"	20 3/8"	47 lbs	92 lbs
Shipping	23"	25"	29"	58 lbs	—



Customize Your Brewer

Dispensers



◀ 3.0 Liter Stainless Steel
Thermal Pump Lever Airpot

D041

Accessories

2 Station Airpot Rack with Drip Tray	A034
3 Station Airpot Rack with Drip Tray	A035
5 Station Airpot Rack with Drip Tray	A036
Airpot Hot Tea Infuser	A112
Drip Tray - Square	A137

Water Filtration System

Everpure® Filter System and Replacement Cartridges	See Page 50
BWT bestmax Filter System and Replacement Cartridges	See Page 50

Paper Coffee Filters

13" x 5" (500 / Case)	F002
-----------------------	------

Brew Baskets



◀ 13" x 5" Stainless Steel

B012218B1



◀ 13" x 5" Plastic w/ Brown Insert

B014218BN2





Features & Benefits

- 1.0 gallon size provides flexibility in small- to medium-sized operations.
- Extractor® technology allows you to precisely dial-in the profile of even the most complex coffee blend to unlock its full freshness, aroma and flavor.
- User-friendly touchscreen interface display allows for quick and easy access to brew controls to quickly begin the brewing process for up to 4 separate coffee recipes and/or batch sizes.
- The brewer's low profile and small footprint make it the perfect choice for areas in which service space is at a premium - breakrooms, cafeteria countertops, lobby coffee service, etc.
- Built for flexibility and portability, vacuum-lined pump lever airpots quickly turn virtually any remote location into a hot and fresh beverage service station.
- Dispenser Guide panel converts for direct brewing into L3S-10 LUXUS® Thermal Servers.



Approximate Cups Per Hour



123

8oz.

82

12oz.

62

16oz.

49

20oz.

Based on maximum power setting.



Electrical Configuration

Configuration Code		Heater Config.	Voltage	Phase	Wires	KW	Electrical Connection	Max Amp Draw	Gallon/Hour
PLASTIC BASKET	STAINLESS STEEL BASKET								
E213152	E213152M	1 x 2.3 kW	100-120	1	2+G	1.7-2.4	NEMA 5-20P	16.5-19.7	5.8 ⁽¹⁾
E213158	E213158M	1 x 3.0 kW	200-240	1	2+G	2.2-3.1	NEMA 6-15P	10.9-13.0	9.7 ⁽¹⁾
UNIVERSAL VOLTAGE OPTIONS									
E213174	E213174M	1 x 1.5 kW	120	1	2+G	1.6	NEMA 5-15P	13.0	3.9 ⁽¹⁾⁽³⁾
Optional ⁽²⁾	Optional ⁽²⁾	2 x 1.5 kW	120/208-240	1	3+G	3.1	L1 / L2 / N+G	13.0	5.8 ⁽¹⁾⁽³⁾
E213175	E213175M	1 x 1.7 kW	120	1	2+G	1.8	NEMA 5-15P	14.7	4.4 ⁽¹⁾⁽³⁾
Optional ⁽²⁾	Optional ⁽²⁾	2 x 1.7 kW	120/208-240	1	3+G	3.5	L1 / L2 / N+G	14.7	8.7 ⁽¹⁾⁽³⁾
E213176	E213176M	1 x 2.3 kW	120	1	2+G	2.4	NEMA 5-20P	19.7	5.8 ⁽¹⁾⁽³⁾
Optional ⁽²⁾	Optional ⁽²⁾	2 x 2.3 kW	120/208-240	1	3+G	4.7	L1 / L2 / N+G	19.7	11.0 ⁽¹⁾⁽³⁾

(1) Based on standard factory settings: 5.5 minute brew time; 0% prewet; 200°F water. 1 gallon per batch.

(2) Sold with factory cord & plug for 120 Volt configuration. Optional user connection to a terminal block requiring L1, L2, N and ground to 120/208-240 VAC.

No airpot locator for this group. User selectable for optional, dual in-series heater configuration.

(3) 3 liters per batch.



Water Specification

Water Inlet	Water Pressure	Minimum Flow Rate
3/8" Male Flare Fitting	20-75 psig	1 1/2 gpm



Dimensions

Type	Height	Width	Depth	Weight	Filled Weight
Product	27 3/4"	11 3/4"	20 3/8"	29 lbs	55 lbs
Shipping	16"	23"	29"	41 lbs	—



Customize Your Brewer

Dispensers



◀ 1.0 Gallon Stainless Steel Thermal Pump Lever Airpot

D063



◀ 1.0 Gallon LUXUS® Thermal Server (L3S-10)
Must be used with S3S Serving Stations.

D051

Accessories

2 Station Airpot Rack with Drip Tray	A034
3 Station Airpot Rack with Drip Tray	A035
5 Station Airpot Rack with Drip Tray	A036
Airpot Hot Tea Infuser	A112
Drip Tray - Square	A137

Water Filtration System

Everpure® Filter System and Replacement Cartridges	See Page 50
BWT bestmax Filter System and Replacement Cartridges	See Page 50

Paper Coffee Filters

13" x 5" (500 / Case)	F002
-----------------------	------

Brew Baskets



◀ 13" x 5" Stainless Steel

B012218B1



◀ 13" x 5" Plastic w/ Brown Insert

B014218BN2



Features & Benefits

- 2 x 1.0 gallon size provides flexibility in small- to medium-sized operations.
- Extractor® technology allows you to precisely dial-in the profile of even the most complex coffee blend to unlock its full freshness, aroma and flavor.
- User-friendly touchscreen interface display allows for quick and easy access to brew controls to quickly begin the brewing process for up to 8 separate coffee recipes and/or batch sizes.
- Twin station configuration provides the flexibility of brewing two different recipes or into two different types of dispensers at the same time - or both!
- Built for flexibility and portability, vacuum-lined pump lever airpots quickly turn virtually any remote location into a hot and fresh beverage service station.
- Dispenser Guide panel converts for direct brewing into L3S-10 LUXUS® Thermal Servers.



Approximate Cups Per Hour



+



224

8oz.

149

12oz.

112

16oz.

90

20oz.

Based on maximum power setting.



Electrical Configuration

Configuration Code	Heater Config.	Voltage	Phase	Wires	KW	Electrical Connection	Max Amp Draw	Gallon/Hour
PLASTIC BASKET	STAINLESS STEEL BASKET							
E213253	E213253M	2 x 3.0 kW	200-240	1	2+G	4.2-6.1	Terminal Block	21.3-25.5
(1) Based on standard factory settings: 5.5 minute brew time; 0% prewet; 200°F water. 3 liters per batch.								14.0 ⁽¹⁾



Water Specification

Water Inlet	Water Pressure	Minimum Flow Rate
3/8" Male Flare Fitting	20-75 psig	1 1/2 gpm



Dimensions

Type	Height	Width	Depth	Weight	Filled Weight
Product	27 3/4"	19 3/4"	20 3/8"	47 lbs	92 lbs
Shipping	23"	25"	29"	58 lbs	-



Customize Your Brewer

Dispensers



◀ 1.0 Gallon Stainless Steel Thermal Pump Lever Airpot

D063



◀ 1.0 Gallon LUXUS® Thermal Server (L3S-10)
Must be used with S3S Serving Stations.

D051

Accessories

2 Station Airpot Rack with Drip Tray	A034
3 Station Airpot Rack with Drip Tray	A035
5 Station Airpot Rack with Drip Tray	A036
Airpot Hot Tea Infuser	A112
Drip Tray - Square	A137

Water Filtration System

Everpure® Filter System and Replacement Cartridges	See Page 50
BWT bestmax Filter System and Replacement Cartridges	See Page 50

Paper Coffee Filters

13" x 5" (500 / Case)	F002
-----------------------	------

Brew Baskets



◀ 13" x 5" Stainless Steel

B012218B1



◀ 13" x 5" Plastic w/ Brown Insert

B014218BN2



► CBS-2141XTS SINGLE STATION | 1.0 Gallon Coffee Brewer

Features & Benefits

- 1.0 gallon size provides flexibility in small- to medium-sized operations.
- Extractor® technology allows you to precisely dial-in the profile of even the most complex coffee blend to unlock its full freshness, aroma and flavor.
- User-friendly touchscreen interface display allows for quick and easy access to brew controls to quickly begin the brewing process for up to 4 separate coffee recipes and/or batch sizes.
- The convenient one gallon size is perfect for multiple recipe offerings found in segments such as C-Stores, Bakery Café, QSR, etc.
- Designed to brew directly into our best-selling Luxus® L3D series portable dispensers and L3S series servers. (Listed below and sold separately).
- Available in multiple power configurations to efficiently meet your cups-per-hour requirement and keep energy costs at a minimum.



Approximate Cups Per Hour



184

8oz.

123

12oz.

92

16oz.

74

20oz.

Based on maximum power setting.

Electrical Configuration

Configuration Code		Heater Config.	Voltage	Phase	Wires	KW	Electrical Connection	Max Amp Draw	Gallon/Hour
PLASTIC BASKET	STAINLESS STEEL BASKET								
E214154	E214154M	1 x 1.7 kW	100-120	1	2+G	1.3-1.8	NEMA 5-15P	12.3-14.7	4.4 ⁽¹⁾
E214151	E214151M	1 x 2.3 kW	100-120	1	2+G	1.7-2.4	NEMA 5-20P	16.5-19.7	5.8 ⁽¹⁾
UNIVERSAL VOLTAGE OPTIONS									
E214171	E214171M	1 x 1.5 kW	120	1	2+G	1.6	NEMA 5-15P	13.0	3.9 ⁽¹⁾⁽³⁾
Optional ⁽²⁾	Optional ⁽²⁾	2 x 1.5 kW	120/208-240	1	3+G	3.1	L1 / L2 / N+G	13.0	5.8 ⁽¹⁾⁽³⁾
E214172	E214172M	1 x 1.7 kW	120	1	2+G	1.8	NEMA 5-15P	14.7	4.4 ⁽¹⁾⁽³⁾
Optional ⁽²⁾	Optional ⁽²⁾	2 x 1.7 kW	120/208-240	1	3+G	3.5	L1 / L2 / N+G	14.7	8.7 ⁽¹⁾⁽³⁾
E214173	E214173M	1 x 2.3 kW	120	1	2+G	2.4	NEMA 5-20P	19.7	5.8 ⁽¹⁾⁽³⁾
Optional ⁽²⁾	Optional ⁽²⁾	2 x 2.3 kW	120/208-240	1	3+G	4.7	L1 / L2 / N+G	19.7	11.0 ⁽¹⁾⁽³⁾

(1) Based on standard factory settings: 5.5 minute brew time; 0% prewet; 200°F water. 1 gallon per batch.

(2) Sold with factory cord & plug for 120 Volt configuration. Optional user connection to a terminal block requiring L1, L2, N and ground to 120/208-240 VAC. No airport locator for this group. User selectable for optional, dual in-series heater configuration.

(3) 3 liters per batch.

Water Specification

Water Inlet	Water Pressure	Minimum Flow Rate
3/8" Male Flare Fitting	20-75 psig	1 1/2 gpm

Dimensions

Type	Height	Width	Depth	Weight	Filled Weight
Product	34 3/8"	11 3/4"	20 3/8"	29 lbs	55 lbs
Shipping	16"	23"	29"	41 lbs	—

Customize Your Brewer

Dispensers



◀ 1.0 Gallon LUXUS® Thermal Server (L3S-10)
Must be used with S3S Serving Stations.

D051



◀ 1.0 Gallon LUXUS® Thermal Dispenser (L3D-10)

D048

Accessories

Single Serving Station for L3S-10 (S3S-10-1)	A093
Twin Serving Station for L3S-10 (S3S-10-2)	A094
Triple Serving Station for L3S-10 (S3S-10-3)	A096
1.0 Gallon Hot Tea Infuser	A113
Drip Tray - Square	A137

Water Filtration System

Everpure® Filter System and Replacement Cartridges	See Page 50
BWT bestmax Filter System and Replacement Cartridges	See Page 50

Paper Coffee Filters

13" x 5" (500 / Case)	F002
-----------------------	------

Brew Baskets



◀ 13" x 5" Stainless Steel

B012218B1



◀ 13" x 5" Plastic w/ Brown Insert

B014218BN2

► CBS-2142XTS TWIN STATION | 1.0 Gallon Coffee Brewer

☀ Features & Benefits

- 2 x 1.0 gallon size provides flexibility in small- to medium-sized operations.
- Extractor® technology allows you to precisely dial-in the profile of even the most complex coffee blend to unlock its full freshness, aroma and flavor.
- User-friendly touchscreen interface display allows for quick and easy access to brew controls to quickly begin the brewing process for up to 8 separate coffee recipes and/or batch sizes.
- The convenient one gallon size is perfect for multiple recipe offerings found in segments such as C-Stores, Bakery Café, QSR, etc.
- Designed to brew directly into our best-selling Luxus® L3D series portable dispensers and L3S series servers (Listed below and sold separately).



☕ Approximate Cups Per Hour



⚡ Electrical Configuration

Configuration Code	Heater Config.	Voltage	Phase	Wires	KW	Electrical Connection	Max Amp Draw	Gallon/Hour
PLASTIC BASKET STAINLESS STEEL BASKET								
E214251 E214251M	2 x 3.0 kW	200-240	1	2+G	4.2-6.1	Terminal Block	21.3-25.5	14.0 ⁽¹⁾

(1) Based on standard factory settings: 5.5 minute brew time; 0% prewet; 200°F water. 1 gallon per batch.

💧 Water Specification

Water Inlet	Water Pressure	Minimum Flow Rate
3/8" Male Flare Fitting	20-75 psig	1 1/2 gpm

↔ Dimensions

Type	Height	Width	Depth	Weight	Filled Weight
Product	34 3/8"	19 3/4"	20 3/8"	47 lbs	92 lbs
Shipping	23"	25"	29"	58 lbs	—

🛒 Customize Your Brewer

Dispensers



◀ 1.0 Gallon LUXUS® Thermal Server (L3S-10)
Must be used with S3S Serving Stations.

D051



◀ 1.0 Gallon LUXUS® Thermal Dispenser (L3D-10)

D048

Accessories

Single Serving Station for L3S-10 (S3S-10-1)	A093
Twin Serving Station for L3S-10 (S3S-10-2)	A094
Triple Serving Station for L3S-10 (S3S-10-3)	A096
1.0 Gallon Hot Tea Infuser	A113
Drip Tray - Square	A137

Water Filtration System

Everpure® Filter System and Replacement Cartridges	See Page 50
BWT bestmax Filter System and Replacement Cartridges	See Page 50

Paper Coffee Filters

13" x 5" (500 / Case)	F002
-----------------------	-------------

Brew Baskets



◀ 13" x 5" Stainless Steel

B012218B1



◀ 13" x 5" Plastic w/ Brown Insert

B014218BN2



Features & Benefits

- 1.5 gallon size brewer meets the rigorous demands of medium- to large-sized operations.
- Extractor® technology allows you to precisely dial-in the profile of even the most complex coffee blend to unlock its full freshness, aroma and flavor.
- User-friendly touchscreen interface display allows for quick and easy access to brew controls to quickly begin the brewing process for up to 4 separate coffee recipes and/or batch sizes.
- The 1.5 gallon brewer is a popular choice across many segments due to its speed, capacity and reliable performance during peak service times.
- Brew directly into our best-selling LUXUS® L3D series dispensers or try the ultra-durable TPD series thermal dispensers and extend your indoor/outdoor beverage service capabilities (Listed below and sold separately).



Approximate Cups Per Hour



248

8oz.

165

12oz.

124

16oz.

99

20oz.

Based on maximum power setting.



Electrical Configuration

Configuration Code	Heater Config.	Voltage	Phase	Wires	KW	Electrical Connection	Max Amp Draw	Gallon/Hour
PLASTIC BASKET	STAINLESS STEEL BASKET							
E215151	E215151M	2 x 3.0 kW	200-240	1	2+G	4.7-6.1	Terminal Block	22.1-25.5
								11.5 ⁽¹⁾

(1) Based on standard factory settings: 5.5 minute brew time; 0% prewet; 200°F water. 1.5 gallon per batch.



Water Specification

Water Inlet	Water Pressure	Minimum Flow Rate
3/8" Male Flare Fitting	20-75 psig	1 1/2 gpm



Dimensions

Type	Height	Width	Depth	Weight	Filled Weight
Product	36 3/4"	12 3/4"	20 3/8"	53 lbs	106 lbs
Shipping	17"	20"	35"	57 lbs	—



Customize Your Brewer

Dispensers



◀ 1.5 Gallon LUXUS® Thermal Server (L3S-15)
Must be used with S3S Serving Stations.

D052



◀ 1.5 Gallon LUXUS® Thermal Dispenser (L3D-15)

D049



◀ 1.5 Gallon LUXUS® Portable Thermal Dispenser (TPD-15)

D009

Accessories

Single Serving Station for L3S-10 (S3S-10-1)	A093
Twin Serving Station for L3S-10 (S3S-10-2)	A094
Triple Serving Station for L3S-10 (S3S-10-3)	A096
1.0 Gallon Hot Tea Infuser	A113
Drip Tray - Square	A137

Water Filtration System

Everpure® Filter System and Replacement Cartridges	See Page 50
BWT bestmax Filter System and Replacement Cartridges	See Page 50

Paper Coffee Filters

15" x 5.5" (500 / Case)	F001
-------------------------	------

Brew Baskets



◀ 16" x 6" Stainless Steel

B001280B1



◀ 16" x 6" Plastic w/ Brown Insert

B015280BN2

► CBS-2152XTS TWIN STATION | 1.5 Gallon Coffee Brewer

☀ Features & Benefits

- 2 x 1.5 gallon size meets the rigorous demands of medium- to large-sized operations.
- Extractor® technology allows you to precisely dial-in the profile of even the most complex coffee blend to unlock its full freshness, aroma and flavor.
- User-friendly touchscreen interface display allows for quick and easy access to brew controls to quickly begin the brewing process for up to 8 separate coffee recipes and/or batch sizes.
- Twin station configuration provides the flexibility of brewing two different recipes or into two different types of dispensers at the same time – or both!
- The twin 1.5 gallon brewer is a popular choice across many segments due to its speed, capacity and reliable performance during peak service times.
- Brew directly into our best-selling Luxus® L3D series dispensers or try the ultra durable TPD series thermal dispensers and extend your indoor/outdoor beverage service capabilities. (Listed below and sold separately).

☕ Approximate Cups Per Hour



⚡ Electrical Configuration

Configuration Code		Heater Config.	Voltage	Phase	Wires	KW	Electrical Connection	Max Amp Draw	Gallon/Hour
PLASTIC BASKET	STAINLESS STEEL BASKET								
E215251	E215251M	2 x 3.0 kW	208-240	1 ⁽²⁾	2+G	4.6-6.1	Terminal Block	22.4-25.8	11.5-15.5 ⁽¹⁾
		3 x 3.0 kW	208-240	3	3+G	6.9-9.1	Terminal Block	19.5-22.5	17.4-23.0 ⁽¹⁾
E215252	E215252M	2 x 5.0 kW	208-240	1 ⁽²⁾	2+G	7.6-10.1	Terminal Block	36.9-42.5	19.3-25.7 ⁽¹⁾
		3 x 5.0 kW	208-240	3	3+G	11.4-15.1	Terminal Block	32.0-36.9	29.0-38.4 ⁽¹⁾

(1) Based on standard factory settings: 5.5 minute brew time; 0% prewet; 200°F water. 1.5 gallon per batch.

(2) 1 or 3 phase configuration is field selectable by user. Sold factory configured for single phase 2 wire plus ground.

💧 Water Specification

Water Inlet	Water Pressure	Minimum Flow Rate
3/8" Male Flare Fitting	20-75 psig	1 1/2 gpm

🛒 Customize Your Brewer

Dispensers



◀ 1.5 Gallon LUXUS® Thermal Server (L3S-15)
Must be used with S3S Serving Stations.

D052



◀ 1.5 Gallon LUXUS® Thermal Dispenser (L3D-15)

D049



◀ 1.5 Gallon LUXUS® Portable Thermal Dispenser (TPD-15)

D009

↔ Dimensions

Type	Height	Width	Depth	Weight	Filled Weight
Product	36 3/4"	21 3/4"	20 3/8"	77 lbs	174 lbs
Shipping	22"	27"	35"	90 lbs	–

Accessories

Single Serving Station for L3S-10 (S3S-10-1)	A093
Twin Serving Station for L3S-10 (S3S-10-2)	A094
Triple Serving Station for L3S-10 (S3S-10-3)	A096
1.0 Gallon Hot Tea Infuser	A113
Drip Tray - Square	A137

Water Filtration System

Everpure® Filter System and Replacement Cartridges	See Page 50
BWT bestmax Filter System and Replacement Cartridges	See Page 50

Paper Coffee Filters

15" x 5.5" (500 / Case)	F001
-------------------------	------

Brew Baskets



◀ 16" x 6" Stainless Steel

B001280B1



◀ 16" x 6" Plastic w/ Brown Insert

B015280BN2



Features & Benefits

- 2 x 2.0 gallon size meets the high-volume demands of large-sized operations.
- EXTRACTOR® technology allows you to precisely dial-in the profile of even the most complex coffee blend to unlock its full freshness, aroma and flavor.
- Twin station configuration provides the flexibility of brewing two different recipes or into two different types of dispensers at the same time – or both!
- Programmable buttons on front panel quickly begin the brewing process for up to 6 separate coffee recipes and/or batch sizes.
- Designed to brew directly into our best-selling Luxus® L3D series portable dispensers and L3S series servers (sold separately).
- Available in multiple power configurations to efficiently meet your cups-per-hour requirement and keep energy costs at a minimum.



Approximate Cups Per Hour



Electrical Configuration

Configuration Code	Heater Config.	Voltage	Phase	Wires	KW	Electrical Connection	Max Amp Draw	Gallon/Hour
US / CANADA								
E53016	2 x 3.0 kW	120/208-240	1	3+G	4.6-6.1	Terminal Block	22.0-25.4	14.0-20.0 ⁽¹⁾
	3 x 3.0 kW	120/208-240	3	4+G	7.0-9.1	Terminal Block	19.4-22.4	22.0-30.0 ⁽¹⁾
E53026	2 x 5.0 kW	120/208-240	1	3+G	7.6-10.1	Terminal Block	36.5-42.1	24.0-34.0 ⁽¹⁾
	3 x 5.0 kW	120/208-240	3	4+G	11.5-15.1	Terminal Block	31.9-36.8	38.0-44.0 ⁽¹⁾

(1) Based on standard factory settings: 4.0 minute brew time; 0% prewet; 200°F water.



Water Specification

Water Inlet	Water Pressure	Minimum Flow Rate
3/8" Male Flare Fitting	20-75 psig	1 1/2 gpm



Dimensions

Type	Height	Width	Depth	Weight	Filled Weight
Product	39 3/8"	21 7/8"	19 1/8"	88 lbs	–
Shipping	38"	22"	27"	98 lbs	–



Customize Your Brewer

Dispensers



◀ 2.0 Gallon LUXUS® Thermal Server (L3S-20)
Must be used with S3S Serving Stations.

D053

◀ 2.0 Gallon LUXUS® Thermal Dispenser (L3D-20)

D050

Accessories

Single Serving Station for L3S-15/20 Server	A097
Twin Serving Station for L3S-15/20 Server	A098
Triple Serving Station for L3S-15/20 Server	A099

Water Filtration System

Everpure® Filter System and Replacement Cartridges	See Page 50
BWT bestmax Filter System and Replacement Cartridges	See Page 50

Paper Coffee Filters

15" x 5.5" (500/Case)	F001
-----------------------	-------------



Features & Benefits

- 3.0 gallon size meets the high-volume demands of large-scale operations.
- EXTRACTOR® technology allows you to precisely dial-in the profile of even the most complex coffee blend to unlock its full freshness, aroma and flavor.
- Programmable buttons on front panel quickly begin the brewing process for up to 3 separate coffee recipes and/or batch sizes.
- The 3.0 gallon brewer is a popular choice for high-volume satellite coffee service in banquet halls, large hotels, cafeterias and catering operations.
- Brew directly into the ultra durable TPD-30 thermal dispensers (sold separately).
- Available in multiple power configurations to efficiently meet your cups-per-hour requirement and keep energy costs at a minimum.

Approximate Cups Per Hour



472 315 236 189
8oz. 12oz. 16oz. 20oz.

Based on maximum power setting.

Electrical Configuration

Configuration Code	Heater Config.	Voltage	Phase	Wires	KW	Electrical Connection	Max Amp Draw	Gallon/Hour
US / CANADA								
E61016	2 x 3.0 kW	120/208-240	1	3+G	4.6-6.1	Terminal Block	22.1-25.5	11.2-14.9 ⁽¹⁾
E61026	2 x 4.0 kW	120/208-240	1	3+G	6.1-8.1	Terminal Block	29.3-33.8	14.9-19.8 ⁽¹⁾
E61036	3 x 3.0 kW	120/208-240	3	4+G	6.9-9.1	Terminal Block	19.5-22.4	16.8-22.2 ⁽¹⁾
E61046	3 x 4.0 kW	120/208-240	3	4+G	9.1-12.1	Terminal Block	25.8-28.9	22.2-29.5 ⁽¹⁾
E61146	3 x 4.0 kW	480	3	3+G	12.1	Terminal Block	14.9	29.5 ⁽¹⁾

(1) Based on standard factory settings: 4.5 minute brew time; 0% prewet; 200°F water.

Water Specification

Water Inlet	Water Pressure	Minimum Flow Rate
3/8" Male Flare Fitting	20-75 psig	3 gpm

Customize Your Brewer

Dispensers



3.0 Gallon LUXUS® Thermal Dispenser (TPD-30)

D012

Dimensions

Type	Height	Width	Depth	Weight	Filled Weight
Product	41 3/4"	18 1/8"	24"	91 lbs	—
Shipping	40"	24"	27"	99 lbs	—

Water Filtration System

Everpure® Filter System and Replacement Cartridges **See Page 50**

BWT bestmax Filter System and Replacement Cartridges **See Page 50**

Paper Coffee Filters

20" x 8" (500 Per Case) **F004**

18" x 7" (500 Per Case) **F005**



► CBS-2062e TWIN STATION | 3.0 Gallon Coffee Brewer

Features & Benefits

- 2 x 3.0 gallon size meets the high-volume demands of large-scale operations.
- EXTRACTOR® technology allows you to precisely dial-in the profile of even the most complex coffee blend to unlock its full freshness, aroma and flavor.
- Twin station configuration provides the flexibility of brewing two different recipes at the same time!
- The twin 3.0 gallon brewer is a popular choice for high-volume satellite coffee service in banquet halls, large hotels and catering operations.
- Brew directly into the ultra durable TPD-30 thermal dispensers (sold separately).
- Available in multiple power configurations to efficiently meet your cups-per-hour requirement and keep energy costs at a minimum.



Approximate Cups Per Hour



Electrical Configuration

Configuration Code	Heater Config.	Voltage	Phase	Wires	KW	Electrical Connection	Max Amp Draw	Gallon/Hour
US / CANADA								
E62016	3 x 3.0 kW	120/208-240	1	3+G	6.9-9.1	Terminal Block	33.3-38.5	16.8-22.2 ⁽¹⁾
E62026	3 x 4.0 kW	120/208-240	1	3+G	9.1-12.1	Terminal Block	44.1-50.8	22.2-29.5 ⁽¹⁾
E62036	3 x 3.0 kW	120/208-240	3	4+G	6.9-9.1	Terminal Block	19.5-22.4	16.8-22.2 ⁽¹⁾
E62046	3 x 4.0 kW	120/208-240	3	4+G	9.1-12.1	Terminal Block	25.7-29.6	22.2-29.5 ⁽¹⁾
E62056	6 x 3.0 kW	120/208-240	3	4+G	13.6-18.1	Terminal Block	38.3-44.1	33.2-44.0 ⁽¹⁾
E62066	6 x 4.0 kW	120/208-240	3	4+G	18.1-24.1	Terminal Block	50.8-58.5	44.0-59.0 ⁽¹⁾
E62146	6 x 3.0 kW	480	3	3+G	18.1	Terminal Block	22.2	44.0 ⁽¹⁾
E62166	6 x 4.0 kW	480	3	3+G	24.1	Terminal Block	29.4	59.0 ⁽¹⁾

(1) Based on standard factory settings: 4.5 minute brew time; 0% prewet; 200°F water.

Water Specification

Water Inlet	Water Pressure	Minimum Flow Rate
3/8" Male Flare Fitting	20-75 psig	3 gpm

Dimensions

Type	Height	Width	Depth	Weight	Filled Weight
Product	41 3/4"	32 1/2"	24"	137 lbs	—
Shipping	37"	22"	27"	147 lbs	—

Customize Your Brewer

Dispensers



3.0 Gallon LUXUS® Thermal Dispenser (TPD-30)

D012

Water Filtration System

Everpure® Filter System and Replacement Cartridges **See Page 50**
 BWT bestmax Filter System and Replacement Cartridges **See Page 50**

Paper Coffee Filters

20" x 8" (500 Per Case) **F004**
 18" x 7" (500 Per Case) **F005**

▶ XTS™ Tea Brewer

The EXTRACTOR TBS-2121 Twin 3.5 Gallon Touchscreen Iced Tea Brewer combines the simplicity of a touchscreen with new features like the innovative “intelligent” brew basket for quick, efficient operation and for producing the most flavorful taste profiles from your teas.



▶ Standard Features:

1 Touchscreen Simplicity

Allows for quick and easy access to brew controls.

2 SD Card Slot

Perform software and diagnostic updates, copy recipes and backup custom program settings with an easily accessible built-in SD card slot.

3 Mixed Material Construction

Mixed material is attractive and comfortable in any front-of-house setting.

4 Spray Head Won't Clog – Ever!

The revolutionary Cascading Spray Dome™ allows for complete, even saturation of the tea bed for perfectly balanced, great tasting tea every time.

5 Intelligent Brew Basket

Built-in sensors automatically detect which side brewing will occur and displays the matching recipes on the touchscreen.

6 Stainless Steel Finish

Withstands the harshest foodservice environments and is durable and easy to clean.



XTS™ TEA BREWER

User-Friendly Operation



User-Friendly Access

Access all controls via an inviting touchscreen interface display and efficiently navigate set-up, programming, diagnostics and daily brewing modes.



Operator Convenience

Brew Side Sensors automatically detect which side brewing will occur and displays the matching recipes on the touchscreen.



Manage The Brew Cycle

Brew cycle information is displayed with dynamic icons designed to represent brew stage, time, temperature and volume data.



► One Machine, Many Options...

Powered by the same brewing technology as the XTS™ series coffee brewer, the versatile TBS-2121 Series Tea Brewer gives you the flexibility of brewing several types of the most popular hot or cold beverages on a single machine. The high-quality FETCO combination tea/coffee Brewer allows you to expand your menu without increasing equipment costs or counter space and as always, you can count on the reliable and energy efficient performance of FETCO equipment.

► Brewing Options:



**Iced Tea &
Flavored Iced Tea**
(with liquid pump configuration)



Hot Coffee



Hot Tea



Iced Coffee

► Dispensing Options:



D041 ►

3.0L Pump
Lever Airpot

D063 ►

1.0G Pump
Lever Airpot

◀ Z071

Universal
TBS Shelf



L3S-10 ►

1.0 Gallon Server

◀ Z071

Universal
TBS Shelf



L3D-10 ►

1.0 Gallon
Dispenser

◀ 1102.00205.00

Universal Flat Base

Brew directly into 3.0L or 1.0 gallon Airpots with the adjustable height Universal TBS Shelf (all sold separately).

Brew directly into the 1.0 gallon L3S-10 Server with the adjustable height Universal TBS Shelf (both sold separately).

Brew directly into the 1.0 gallon L3D-10 Dispenser with the adjustable height Universal TBS Flat Base (both sold separately).



Features & Benefits

- 2 x 3.5 gallon size meets the volume demands of medium- to large-scale operations.
- The revolutionary Cascading Spray Dome® allows for complete, even saturation of the tea bed for perfectly balanced, great tasting tea every time.
- User-friendly touchscreen blends intuitive icons with dynamic time and volume data to provide instant visual feedback.
- Program up to 9 different recipes and begin the brew cycle with a touch of a button.
- Recipes automatically appear on-screen when the basket handle is positioned above the desired brew station.
- Liquid sweetener infusion pump available as a factory installed option.
- Brewer shown with 2ea. ITD-2135 3.5 Gallon Iced Tea Dispenser (sold separately).



Approximate Cups Per Hour

288
8oz.192
12oz.144
16oz.115
20oz.

Based on maximum power setting.



Electrical Configuration

Configuration Code	Heater Config.	Voltage	Phase	Wires	KW	Electrical Connection	Max Amp Draw	Gallon/Hour
US / CANADA								
T212101	1 x 1680 W	120	1	2+G	1.7	NEMA 5-15P/5-20P-c	14.0	12.0⁽¹⁾
US / CANADA WITH LIQUID SWEETENER INFUSION PUMP								
T212111	1 x 1680 W	120	1	2+G	1.8	NEMA 5-20P/5-20P-c	14.5	12.0⁽¹⁾

(1) Based on standard factory settings: 5.5 minute brew time; 0% prewet; 200°F water.



Water Specification

Water Inlet	Water Pressure	Minimum Flow Rate
1/4" Male Flare Fitting	20-75 psig	1 gpm



Dimensions

Type	Height	Width	Depth	Weight	Filled Weight
T212101					
Product	34"	13 1/2"	19 1/2"	35 lbs	44 lbs
Shipping	37 1/4"	14 1/2"	23 1/2"	46 lbs	—
T212111					
Product	34"	13 1/2"	19 1/2"	40 lbs	60 lbs
Shipping	37 1/4"	14 1/2"	23 1/2"	51 lbs	—



Customize Your Brewer

Dispensers



◀ 3.5 Gallon Iced Tea Dispenser (ITD-2135)

D064

◀ 3.5 Gallon Iced Tea Dispenser (ITD-2135) with Iced Tea Color Graphic*

D064W112

Accessories

Universal TBS Shelf and Brew Basket Kit (Includes shelf and mounting hardware)	Z071
Brew Basket for TBS-2121 Iced Tea Brewer 15"[Dia.]x5.5"[D] (Includes 1ea. blue handle insert and 7pc. drip-out orifice set)	B013000B2
Add-On Dispenser Platform with Guide Rails for ITD-2135 Dispensers: 7.5"x14.5"[WxD]	1102.00202.00
Universal Dispenser Platform with Flat Surface: 13"x14"[WxD]	1102.00205.00
7pc. Interchangeable Drip-Out Orifice Set for Plastic Brew Basket (B013000B2)	1023.00185.00
Color Handle Insert for Plastic Brew Basket: Blue	1023.00180.00
Color Handle Insert for Plastic Brew Basket: Red	1023.00190.00
Color Handle Insert for Plastic Brew Basket: Green	1023.00191.00
Color Handle Insert for Plastic Brew Basket: Orange	1023.00192.00

Water Filtration System

Everpure® Filter System and Replacement Cartridges	See Page 50
BWT bestmax Filter System and Replacement Cartridges	See Page 50

Paper Filters

15" x 5.5" (500 / Case)	F001
-------------------------	-------------

*Graphic shown for illustration purposes only. Subject to change.



► Handle Operated Brewers

Designed for simplicity, the Handle Operated series brewers save the operator time and effort by delivering quick and consistent results from your pre-programmed coffee recipe. It is the reliable choice for serving high-volumes of single batch coffee all day long.

► Standard Features:

- 1 Solid Stainless Steel Construction**
Withstands the harshest foodservice environments and is durable and easy to clean.
- 2 Set It and Forget It**
Once your recipe parameters are programmed in, this brewer delivers consistent and repeatable results for serving staff or equipment operators alike.
- 3 Handle Operation – A Quick Start!**
After loading the coffee grounds, simply twist the handle to begin the brew cycle and in minutes your perfectly brewed coffee is ready to serve – over and over again!
- 4 Half-Batch Switch**
Need only a half batch to adjust to changing demand? Simply flip a switch on the face panel for a half or full batch brew (per side).
- 5 Secure Brew Basket Locks**
The lock automatically falls into place when brew cycle begins to help prevent accidental removal of the basket before the brew cycle ends.
- 6 Manual Water Faucet**
Safely dispense hot water away from steam and brew basket.
- 7 Shown with L3D-15 Dispensers (sold separately)**
Also works with L3S Series servers and TPD Series dispensers.





Features & Benefits

- 1.5 gallon size brewer meets the rigorous demands of medium- to large-sized operations.
- Designed for simplicity, the Handle Operated series brewers save operators time and effort by delivering consistent results from your pre-programmed coffee recipe.
- Single station brewer fits well in areas where high-volume service is needed but available space is at a premium.
- 1.5 gallon brewer is a popular choice across many segments due to its speed, capacity and reliable performance during peak service times.
- Brew directly into our best-selling LUXUS® L3D series dispensers or try the ultra durable TPD series thermal dispensers and extend your indoor/outdoor beverage service capabilities (sold separately).
- Available in multiple power configurations to efficiently meet your cups-per-hour requirement and keep energy costs at a minimum.



Approximate Cups Per Hour



238
8oz.

159
12oz.

119
16oz.

95
20oz.

Based on maximum power setting.



Electrical Configuration

Configuration Code	Heater Config.	Voltage	Phase	Wires	KW	Electrical Connection	Max Amp Draw	Gallon/Hour
US / CANADA								
C51016	1 x 1.8 kW	120	1	2+G	1.9	Terminal Block	15.8	4.5 ⁽¹⁾
C51026	1 x 3.0 kW	120/208-240	1	3+G	2.3-3.1	Terminal Block	11.2-12.9	6.0 ⁽¹⁾
C51036	1 x 4.0 kW	120/208-240	1	3+G	3.1-4.1	Terminal Block	14.8-17.1	7.5-10.5 ⁽¹⁾
C51046	2 x 3.0 kW	120/208-240	1	3+G	4.6-6.1	Terminal Block	22.0-25.4	10.5-15.0 ⁽¹⁾
C51056	2 x 4.0 kW	120/208-240	1	3+G	6.1-8.1	Terminal Block	29.3-33.8	15.0-19.5 ⁽¹⁾

(1) Based on standard factory settings: 4.0 minute brew time; 0% prewet; 200°F water.



Water Specification

Water Inlet	Water Pressure	Minimum Flow Rate
3/8" Male Flare Fitting	20-75 psig	1/2 gpm



Dimensions

Type	Height	Width	Depth	Weight	Filled Weight
Product	36"	12"	20"	55 lbs	–
Shipping	35"	14"	23"	66 lbs	–



Customize Your Brewer

Dispensers



◀ 1.5 Gallon LUXUS® Thermal Server (L3S-15)
Must be used with S3S Serving Stations.

D052

◀ 1.5 Gallon LUXUS® Thermal Dispenser (L3D-15)

D049

◀ 1.5 Gallon LUXUS® Portable Thermal Dispenser (TPD-15)

D009

Accessories

Single Serving Station for L3S-15/20 Server	A097
Twin Serving Station for L3S-15/20 Server	A098
Triple Serving Station for L3S-15/20 Server	A099
Identifier Plates, Acrylic	A069
Hot Tea Infuser (1.5 Gallon Size)	A113
Drip Tray - Square	A137

Water Filtration System

Everpure® Filter System and Replacement Cartridges	See Page 50
BWT bestmax Filter System and Replacement Cartridges	See Page 50
Paper Coffee Filters	
15" x 5.5" (500/Case)	F001



Features & Benefits

- This best selling 2 x 1.5 gallon size meets the rigorous demands of medium- to large-sized operations.
- Designed for simplicity, the Handle Operated series brewers save operators time and effort by delivering consistent results from your pre-programmed coffee recipe.
- Twin station configuration provides the flexibility of brewing two different recipes or into two different types of dispensers at the same time!
- Twin 1.5 gallon brewer is a popular choice across many segments due to its speed, capacity and reliable performance during peak service times.
- Brew directly into our best-selling LUXUS® L3D series dispensers or try the ultra-durable TPD series thermal dispensers and extend your beverage service capabilities (sold separately).
- Available in multiple power configurations to efficiently meet your cups-per-hour requirement and keep energy costs at a minimum.

Approximate Cups Per Hour



Electrical Configuration

Configuration Code	Heater Config.	Voltage	Phase	Wires	KW	Electrical Connection	Max Amp Draw	Gallon/Hour
US / CANADA								
C52016	2 x 3.0 kW	120/208-240	1	3+G	4.6-6.1	Terminal Block	22.0-25.4	10.5-15.0 ⁽¹⁾
C52026	2 x 4.0 kW	120/208-240	1	3+G	6.1-8.1	Terminal Block	29.3-33.8	15.0-19.5 ⁽¹⁾
C52036 ⁽²⁾	3 x 3.0 kW	120/208-240	3	4+G	7.0-9.1	Terminal Block	19.5-22.4	16.5-22.5 ⁽¹⁾
C52046 ⁽²⁾	3 x 4.0 kW	120/208-240	3	4+G	9.1-12.1	Terminal Block	25.6-29.6	22.5-30.0 ⁽¹⁾
C52186 ⁽²⁾	3 x 4.0 kW	440-480	3	3+G	10.3-12.1	Terminal Block	13.6-14.8	22.5-30.0 ⁽¹⁾

(1) Based on standard factory settings: 4.0 minute brew time; 0% prewet; 200°F water.

(2) Requires 3 phase upcharge (Z056).

Water Specification

Water Inlet	Water Pressure	Minimum Flow Rate
3/8" Male Flare Fitting	20-75 psig	1 1/4 gpm

Dimensions

Type	Height	Width	Depth	Weight	Filled Weight
Product	36"	21"	20"	82 lbs	—
Shipping	35"	23"	23"	100 lbs	—

Customize Your Brewer

Dispensers



- ◀ 1.5 Gallon LUXUS® Thermal Server (L3S-15) **D052**
Must be used with S3S Serving Stations.



- ◀ 1.5 Gallon LUXUS® Thermal Dispenser (L3D-15) **D049**



- ◀ 1.5 Gallon LUXUS® Portable Thermal Dispenser (TPD-15) **D009**

Accessories

Single Serving Station for L3S-15/20 Server	A097
Twin Serving Station for L3S-15/20 Server	A098
Triple Serving Station for L3S-15/20 Server	A099
Identifier Plates, Acrylic	A069
Hot Tea Infuser (1.5 Gallon Size)	A113
Drip Tray - Square	A137

Water Filtration System

Everpure® Filter System and Replacement Cartridges	See Page 50
BWT bestmax Filter System and Replacement Cartridges	See Page 50
Paper Coffee Filters	
15" x 5.5" (500/Case)	F001

Features & Benefits

- 2 x 2.0 gallon size meets the high-volume demands of large-sized operations.
- Designed for simplicity, the Handle Operated series brewers save operators time and effort by delivering consistent results from your pre-programmed coffee recipe.
- Twin station configuration provides the flexibility of brewing two different recipes or into two different types of dispensers at the same time!
- Ample 2.0 gallon capacity is an excellent choice for high-volume self-service areas such as cafeterias, airports, banquets, casual dining, etc.
- Designed to brew directly into our best-selling LUXUS® L3D series portable dispensers and L3S series servers (sold separately).
- Available in multiple power configurations to efficiently meet your cups-per-hour requirement and keep energy costs at a minimum.



Approximate Cups Per Hour



Electrical Configuration

Configuration Code	Heater Config.	Voltage	Phase	Wires	KW	Electrical Connection	Max Amp Draw	Gallon/Hour
US / CANADA								
C53016	2 x 3.0 kW	120/208-240	1	3+G	4.6-6.1	Terminal Block	22.0-25.4	14.0-20.0 ⁽¹⁾
C53026	2 x 4.0 kW	120/208-240	1	3+G	6.1-8.1	Terminal Block	29.3-33.8	20.0-26.0 ⁽¹⁾
C53036 ⁽²⁾	3 x 3.0 kW	120/208-240	3	4+G	7.0-9.1	Terminal Block	19.4-22.4	22.0-30.0 ⁽¹⁾
C53046 ⁽²⁾	3 x 4.0 kW	120/208-240	3	4+G	9.2-12.1	Terminal Block	25.6-29.6	30.0-40.0 ⁽¹⁾
C53186	3 x 4.0 kW	440-480	3	3+G	10.3-12.1	Terminal Block	13.6-14.8	34.0-40.0 ⁽¹⁾

(1) Based on standard factory settings: 4.0 minute brew time; 0% prewet; 200°F water.

(2) Requires 3 phase upcharge (Z056).

Water Specification

Water Inlet	Water Pressure	Minimum Flow Rate
3/8" Male Flare Fitting	20-75 psig	1 1/4 gpm

Dimensions

Type	Height	Width	Depth	Weight	Filled Weight
Product	40"	21"	16"	87 lbs	–
Shipping	38"	23"	24"	100 lbs	–

Customize Your Brewer

Dispensers



◀ 2.0 Gallon LUXUS® Thermal Server (L3S-20)

D053



◀ 2.0 Gallon LUXUS® Thermal Dispenser (L3D-20)

D050

Accessories

Single Serving Station for L3S-15/20 Server	A097
Twin Serving Station for L3S-15/20 Server	A098
Triple Serving Station for L3S-15/20 Server	A099
Identifier Plates, Acrylic	A069

Water Filtration System

Everpure® Filter System and Replacement Cartridges	See Page 50
BWT bestmax Filter System and Replacement Cartridges	See Page 50

Paper Coffee Filters

15" x 5.5" (500/Case)	F001
-----------------------	------

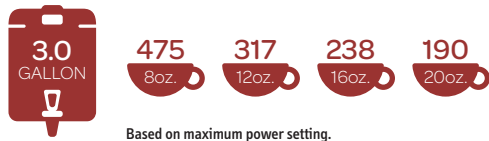


▶ CBS-61H SINGLE STATION | 3.0 Gallon Coffee Brewer

Features & Benefits

- 3.0 gallon size meets the high-volume demands of large-scale operations.
- Designed for simplicity, the Handle Operated series brewers save operators time and effort by delivering consistent results from your pre-programmed coffee recipe.
- Single station brewer fits well in areas where high-volume service is needed but available space is at a premium.
- The 3.0 gallon brewer is a popular choice for high-volume satellite coffee service in banquet halls, large hotels, cafeterias and catering operations.
- Brew directly into the ultra durable TPD-30 thermal dispensers (sold separately).
- Available in multiple power configurations to efficiently meet your cups-per-hour requirement and keep energy costs at a minimum.

Approximate Cups Per Hour



Electrical Configuration

Configuration Code	Heater Config.	Voltage	Phase	Wires	KW	Electrical Connection	Max Amp Draw	Gallon/Hour
US / CANADA								
C61016	2 x 3.0 kW	120/208-240	1	3+G	4.6-6.1	Terminal Block	22.0-25.4	12.0-15.0 ⁽¹⁾
C61026	2 x 4.0 kW	120/208-240	1	3+G	6.1-8.1	Terminal Block	29.3-33.8	15.0-21.0 ⁽¹⁾
C61036 ⁽²⁾	3 x 3.0 kW	120/208-240	3	4+G	7.0-9.1	Terminal Block	19.5-22.4	18.0-21.0 ⁽¹⁾
C61046 ⁽²⁾	3 x 4.0 kW	120/208-240	3	4+G	9.2-12.1	Terminal Block	25.6-29.6	21.0-27.0 ⁽¹⁾

(1) Based on standard factory settings: 4.0 minute brew time; 0% prewet; 200°F water.
 (2) Requires 3 phase upcharge (Z056).

Water Specification

Water Inlet	Water Pressure	Minimum Flow Rate
3/8" Male Flare Fitting	20-75 psig	1 gpm

Customize Your Brewer

Dispensers



3.0 Gallon LUXUS® Thermal Dispenser (TPD-30)

D012



Dimensions

Type	Height	Width	Depth	Weight	Filled Weight
Product	40"	21 1/2"	24"	111 lbs	—
Shipping	38"	24"	23"	115 lbs	—

Water Filtration System

Everpure® Filter System and Replacement Cartridges **See Page 50**
 BWT bestmax Filter System and Replacement Cartridges **See Page 50**

Paper Coffee Filters

20" x 8" (500 Per Case) **F004**
 18" x 7" (500/Case) for Half Batch Brew Basket **F005**

Features & Benefits

- 2 x 3.0 gallon size meets the high-volume demands of large-scale operations.
- Designed for simplicity, the Handle Operated series brewers save operator time and effort by delivering consistent results from your pre-programmed coffee recipe.
- Twin station configuration provides the flexibility of brewing two different recipes at the same time!
- The twin 3.0 gallon brewer is a popular choice for high-volume satellite coffee service in banquet halls, large hotels, cafeterias and catering operations.
- Brew directly into the ultra durable TPD-30 thermal dispensers (sold separately).
- Available in multiple power configurations to efficiently meet your cups-per-hour requirement and keep energy costs at a minimum.



Approximate Cups Per Hour



Electrical Configuration

Configuration Code	Heater Config.	Voltage	Phase	Wires	KW	Electrical Connection	Max Amp Draw	Gallon/Hour
US / CANADA								
C62016	3 x 3.0 kW	120/208-240	1	3+G	6.9-9.1	Terminal Block	32.9-37.9	18.0-21.0 ⁽¹⁾
C62026	3 x 4.0 kW	120/208-240	1	3+G	9.1-12.1	Terminal Block	43.7-50.4	21.0-30.0 ⁽¹⁾
C62036 ⁽²⁾	3 x 3.0 kW	120/208-240	3	4+G	6.9-9.1	Terminal Block	19.4-22.4	18.0-24.0 ⁽¹⁾
C62046 ⁽²⁾	3 x 4.0 kW	120/208-240	3	4+G	9.1-12.1	Terminal Block	25.6-29.6	21.0-30.0 ⁽¹⁾
C62056 ⁽²⁾	6 x 3.0 kW	120/208-240	3	4+G	13.6-18.1	Terminal Block	38.2-44.0	33.0-45.0 ⁽¹⁾
C62066 ⁽²⁾	6 x 4.0 kW	120/208-240	3	4+G	18.1-24.1	Terminal Block	50.7-58.5	45.0-54.0 ⁽¹⁾
C62146	6 x 3.0 kW	440-480	3	3+G	15.4-18.1	Terminal Block	20.2-22.0	39.0-45.0 ⁽¹⁾
C62166	6 x 4.0 kW	440-480	3	3+G	20.4-24.1	Terminal Block	26.8-29.2	45.0-54.0 ⁽¹⁾

(1) Based on standard factory settings: 4.0 minute brew time; 0% prewet; 200°F water.
(2) Requires 3 phase upcharge (Z056).

Water Specification

Water Inlet	Water Pressure	Minimum Flow Rate
3/8" Male Flare Fitting	20-75 psig	2 gpm

Dimensions

Type	Height	Width	Depth	Weight	Filled Weight
Product	40"	36"	24"	195 lbs	—
Shipping	38"	37"	24"	197 lbs	—

Customize Your Brewer

Dispensers



3.0 Gallon LUXUS® Thermal Dispenser (TPD-30)

D012

Water Filtration System

Everpure® Filter System and Replacement Cartridges **See Page 50**

BWT bestmax Filter System and Replacement Cartridges **See Page 50**

Paper Coffee Filters

20" x 8" (500 Per Case) **F004**

18" x 7" (500/Case) for Half Batch Brew Basket **F005**

► High Volume Coffee Brewing Systems

FETCO® is the category expert and the ONLY manufacturer of ultra high-volume (7-24 Gallon) portable coffee brewing systems for very large scale operations. Due to its high capacity output and reliable performance, FETCO's ultra High Volume Brewing Systems are a consultant's favorite choice for specification in hotels, stadiums, convention centers and other large venues.

► Standard Features:

1 Set It and Forget It

Once your recipe parameters are programmed in, this brewer delivers consistent and repeatable results for serving staff or equipment operators alike.

2 High Volume and High Quality

Designed for maximum output, the brew technology utilizes a combination of adjustable features like bypass and contact time to dial-in your specific flavor profile.

3 Solid Stainless Steel Construction

Withstands the harshest foodservice environments and is durable and easy to clean.

4 Pull-Out Brew Basket Drawer

Each brewer features an easily accessible slide-out brew basket drawer for added operator safety, convenience and serviceability.

5 Steam Control

Efficient, steam containing brew compartments virtually eliminate the need for external ventilation systems and make this system extremely adaptable to any Foodservice environment.

6 Expand Your Service

Brew directly into a High-Capacity LBD Series Thermal Dispenser (sold separately) and transport for high volume coffee or refill service anywhere throughout your venue.

7 Multiple Power Options

Available in multi-voltage and multi-phase configurations to meet your power supply requirements.



Features & Benefits

- 6.0 gallon size meets the high-volume demands of ultra-large-scale operations.
- Designed for high output, the brew technology utilizes a combination of adjustable features like bypass and contact time to dial-in your specific flavor profile.
- Configured for stationary dispensing, this brewer can be mounted to existing countertops or to an optional stainless counter system (CTR-71) (sold separately).
- FETCO® is the category expert and the only manufacturer of ultra-high-volume (6-24 gallon) portable coffee brewing systems.
- Brew directly into the 6.0 gallon capacity LBD-6 thermal dispenser (sold separately) and transport for high-volume coffee or refill service anywhere throughout your venue.
- Available in multiple power configurations to efficiently meet your cups-per-hour requirement and keep energy costs at a minimum.

Approximate Cups Per Hour



480 320 240 192
8oz. 12oz. 16oz. 20oz.

Based on maximum power setting.

Electrical Configuration

Configuration Code	Heater Config.	Voltage	Phase	Wires	KW	Electrical Connection	Max Amp Draw	Gallon/Hour
US / CANADA								
C71017	3 x 5.0 kW	120/208-240	3	4+G	11.5-15.1	Terminal Block	31.9-36.8	18.0-24.0 ⁽¹⁾
C71027	3 x 10.0 kW	120/208-240	3	4+G	22.8-30.1	Terminal Block	63.2-72.9	36.0 ⁽¹⁾
C71037	3 x 10.0 kW	440-480	3	3+G ⁽²⁾	20.8-30.0	Terminal Block	30.1-36.1	36.0 ⁽¹⁾

(1) Based on standard factory settings: 70 minute brew time; 0% prewet; 200°F water.

(2) Plus power cord for control, 120 VAC.

Water Specification

Water Inlet	Water Pressure	Minimum Flow Rate
3/8" Male Flare Fitting	20-75 psig	1 1/2 gpm

Customize Your Brewer

Dispensers



6.0 Gallon LUXUS®
Thermal Dispenser (LBD-6)

D019

Dimensions

Type	Height	Width	Depth	Weight	Filled Weight
Product	43 1/2"	18"	37"	175 lbs	–
Shipping	55"	48"	42"	175 lbs	–

Accessories

Serving Station for LBD-6 with Drip Tray	A018
Counter for CBS-71A (CTR-71)	A019
Identifier Plates, Acrylic	A069
Paper Coffee Filters	
23" x 9" (500/Case)	F006





Features & Benefits

- 2 x 6.0 gallon size meets the high-volume demands of ultra-large-scale operations.
- Designed for maximum output, the brew technology utilizes a combination of adjustable features like bypass and contact time to dial-in your specific flavor profile.
- Configured for stationary dispensing, this brewer can be mounted to existing countertops or to an optional stainless counter system (CTR-72) (sold separately).
- Twin station configuration provides the flexibility of brewing two different recipes at the same time!
- FETCO® is the category expert and the only manufacturer of ultra-high-volume (6-24 gallon) portable coffee brewing systems.
- Brew directly into the 6.0 gallon capacity LBD-6 thermal dispenser and transport for high-volume coffee or refill service anywhere throughout your venue.
- Available in multiple power configurations to efficiently meet your cups-per-hour requirement and keep energy costs at a minimum.



Approximate Cups Per Hour



+



960
8oz.

640
12oz.

480
16oz.

384
20oz.

Based on maximum power setting.



Electrical Configuration

Configuration Code	Heater Config.	Voltage	Phase	Wires	KW	Electrical Connection	Max Amp Draw	Gallon/Hour
US / CANADA								
C72017 ⁽¹⁾	2 x (3x5.0) kW	120/208-240	3	4+G	11.5-15.1	Terminal Block	31.9-36.8	24.0-36.0 ⁽⁴⁾
C72027 ⁽²⁾	2 x (3x5.0) kW	120/208-240	3	4+G	23.0-30.2	Terminal Block	63.8-73.6	36.0-42.0 ⁽⁴⁾
C72037 ⁽¹⁾	2 x (3x10.0) kW	120/208-240	3	4+G	22.8-30.1	Terminal Block	63.2-72.9	54.0-60.0 ⁽⁴⁾
C72047 ⁽¹⁾	2 x (3x10.0) kW	440-480 ⁽³⁾	3	3+G	20.8-30.0	Terminal Block	30.1-36.1	60.0 ⁽⁴⁾
C72057 ⁽²⁾	2 x (3x10.0) kW	440-480 ⁽³⁾	3	3+G	41.7-60.0	Terminal Block	60.1-72.2	60.0 ⁽⁴⁾

(1) With power management.

(2) Without power management.

(3) Plus power cord for control, 120 VAC.

(4) Based on standard factory settings: 7.0 minute brew time; 0% prewet; 200°F water.



Water Specification

Water Inlet	Water Pressure	Minimum Flow Rate
3/8" Male Flare Fitting	20-75 psig	3 gpm



Dimensions

Type	Height	Width	Depth	Weight	Filled Weight
Product	48"	36"	35"	405 lbs	—
Shipping	55"	48"	42"	405 lbs	—



Customize Your Brewer

Dispensers



6.0 Gallon LUXUS® Thermal Dispenser (LBD-6)

D019

Accessories

Serving Station for LBD-6 with Drip Tray	A018
Counter for CBS-71A (CTR-71)	A019
Identifier Plates, Acrylic	A069
Paper Coffee Filters	
23" x 9" (500/Case)	F006

Features & Benefits

- 6.0 gallon size meets the high-volume demands of ultra-large-scale operations.
- Designed for maximum output, the brew technology utilizes a combination of adjustable features like bypass and contact time to dial-in your specific flavor profile.
- Configured for mobile cart dispensing, this brewer can be outfitted with several thermal dispensers (sold separately) for quick deployment of multiple gallons of hot, fresh coffee throughout the venue.
- Single station brewer fits well in areas where high-volume service is needed but available space is at a premium.
- FETCO® is the category expert and the only manufacturer of ultra-high-volume (6-24 gallon) portable coffee brewing systems.
- Brew directly into the 6.0 gallon capacity LBD-6C thermal dispenser with casters (sold separately).
- Available in multiple power configurations to efficiently meet your cups-per-hour requirement and keep energy costs at a minimum.

Approximate Cups Per Hour



480 320 240 192
8oz. 12oz. 16oz. 20oz.

Based on maximum power setting.

Electrical Configuration

Configuration Code	Heater Config.	Voltage	Phase	Wires	KW	Electrical Connection	Max Amp Draw	Gallon/Hour
US / CANADA								
C71018	3 x 5.0 kW	120/208-240	3	4+G	11.5-15.1	Terminal Block	31.9-36.8	18.0-24.0 ⁽¹⁾
C71028	3 x 10.0 kW	120/208-240	3	4+G	22.8-30.1	Terminal Block	63.2-72.9	36.0 ⁽¹⁾
C71038	3 x 10.0 kW	440-480	3	3+G ⁽²⁾	20.8-30.0	Terminal Block	30.1-36.1	36.0 ⁽¹⁾

(1) Based on standard factory settings: 7.0 minute brew time; 0% prewet; 200°F water.

(2) Plus power cord for control, 120 VAC.

Water Specification

Water Inlet	Water Pressure	Minimum Flow Rate
3/8" Male Flare Fitting	20-75 psig	1 1/2 gpm

Dimensions

Type	Height	Width	Depth	Weight	Filled Weight
Product	79"	18 1/2"	44"	175 lbs	—
Shipping	54"	48"	42"	175 lbs	—

Customize Your Brewer

Dispensers



6.0 Gallon Mobile LUXUS® Thermal Dispenser (LBD-6C)

D020

Accessories

Gravity Jug Fill Hose for LBD-6C & LBD-18	A037
Identifier Plates, Acrylic	A069
Paper Coffee Filters	
23" x 9" (500/Case)	F006



Features & Benefits

- 2 x 6.0 gallon size meets the high-volume demands of ultra-large-scale operations.
- Designed for maximum output, the brew technology utilizes a combination of adjustable features like bypass and contact time to dial-in your specific flavor profile.
- Configured for mobile cart dispensing, this brewer can be outfitted with several thermal dispensers (sold separately) for quick deployment of multiple gallons of hot, fresh coffee throughout the venue.
- Twin station configuration provides the flexibility of brewing two different recipes at the same time!
- FETCO® is the category expert and the only manufacturer of ultra-high-volume (6-24 gallon) portable coffee brewing systems.
- Brew directly into several high capacity LUXUS® thermal dispensers (6, 18, 24 gallon – sold separately).
- Available in multiple power configurations to efficiently meet your cups-per-hour requirement and keep energy costs at a minimum.



Approximate Cups Per Hour



960
8oz.

640
12oz.

480
16oz.

384
20oz.

Based on maximum power setting.



Electrical Configuration

Configuration Code	Heater Config.	Voltage	Phase	Wires	KW	Electrical Connection	Max Amp Draw	Gallon/Hour
US / CANADA								
C72018 ⁽¹⁾	2 x (3x5.0) kW	120/208-240	3	4+G	11.5-15.1	Terminal Block	31.9-36.8	24.0-36.0 ⁽⁴⁾
C72028 ⁽²⁾	2 x (3x5.0) kW	120/208-240	3	4+G	23.0-30.2	Terminal Block	63.8-73.6	36.0-42.0 ⁽⁴⁾
C72038 ⁽¹⁾	2 x (3x10.0) kW	120/208-240	3	4+G	22.8-30.1	Terminal Block	63.2-72.9	54.0-60.0 ⁽⁴⁾
C72048 ⁽¹⁾	2 x (3x10.0) kW	440-480 ⁽³⁾	3	3+G	20.8-30.0	Terminal Block	30.1-36.1	60.0 ⁽⁴⁾
C72058 ⁽²⁾	2 x (3x10.0) kW	440-480 ⁽³⁾	3	3+G	41.7-60.0	Terminal Block	60.1-72.2	60.0 ⁽⁴⁾

(1) With power management.

(2) Without power management.

(3) Plus power cord for control, 120 VAC.

(4) Based on standard factory settings: 7.0 minute brew time; 0% prewet; 200°F water.



Water Specification

Water Inlet	Water Pressure	Minimum Flow Rate
3/8" Male Flare Fitting	20-75 psig	3 gpm



Dimensions

Type	Height	Width	Depth	Weight	Filled Weight
Product	79"	44"	35"	410 lbs	–
Shipping*	55"	48"	42"	410 lbs	–

*Shipped on 2 pallets.



Customize Your Brewer

Dispensers



◀ 6.0 Gallon Mobile LUXUS® Thermal Dispenser (LBD-6C)

D020



◀ 18.0 Gallon Mobile LUXUS® Thermal Dispenser (LBD-18)

D021



◀ 24.0 Gallon Mobile LUXUS® Thermal Dispenser (LBD-24)

D022

Accessories

Gravity Jug Fill Hose for LBD-6C & LBD-18

A037

Identifier Plates, Acrylic

A069

Paper Coffee Filters

23" x 9" (500/Case)

F006



► IP44 Maritime Coffee Brewing Systems

FETCO® is the category expert and the ONLY manufacturer of Ingress Protected (IP44) portable coffee brewing systems for maritime operations. In order to receive this unique certification, every piece of "IP44" equipment shipped from the factory is tested to prove its enclosure is impenetrable to certain levels of solid matter and liquids as defined by industry standards. This "ingress" protection is critical to keep the inner workings and electrical systems free of hazards that may be caused by multi-directional water sprays that may contain solid particles (usually during wash down) on board maritime vessels such as ferries or cruise ships.

► Standard Features:

1 Ingress Protection (IP44)

IP44 rated coffee brewers are designed and constructed exclusively to withstand harsh conditions found on board sailing vessels such as ferries and cruise ships and other protected exterior environments (i.e. outdoor coffee or bar service).

2 Stainless Steel Construction

Withstands the harshest maritime environments, is durable and easy to clean.

3 Handle Operation

Designed for simplicity, the Handle Operated series brewers save the operator time and effort by delivering quick, consistent and repeatable results from your pre-programmed coffee recipe.

4 Half Batch Switch

Need only a half batch to adjust to changing demand? Simply flip a switch on the brewer face panel controls half or full batch brew option (per side).

5 Secure Brew Basket Locks

The lock automatically falls into place when brew cycle begins to help prevent accidental removal of the basket before the brew cycle ends.

6 Brew Basket Clips

Fold-over clips keep coffee filters securely in place while the vessel is in motion.

7 Power Management

Each brewer includes a stepdown transformer and is built to accomodate configurations for phasing to common maritime voltages.

8 Stationary Design

Flanged feet with holes allow you to bolt down your equipment to a countertop or equipment stand.

► Maritime Package

Price includes adapting the brewer and TPD Style Dispensers (not shown, sold separately) for maritime uses - 2ea. Bolt down station rings, flanged legs and dispense tube funnel.





Features & Benefits

- 2 x 1.5 gallon size brewer meets the demands of medium- to large-sized maritime operations.
- IP44 rated coffee brewers are designed and constructed exclusively to withstand harsh conditions found in places such as cruise ship galleys and covered outdoor venues.
- Designed for simplicity, the Handle Operated series brewers save operator time and effort by delivering consistent results from your pre-programmed coffee recipe.
- Twin station configuration provides the flexibility of brewing two different recipes at the same time!
- Brew directly into our best-selling LUXUS® L3D series dispensers or try the ultra-durable TPD series thermal dispensers (sold separately).
- Available in multiple power configurations to efficiently meet your cups-per-hour requirement and keep energy costs at a minimum.



Approximate Cups Per Hour



+



475
8oz.

317
12oz.

238
16oz.

190
20oz.

Based on maximum power setting.



Electrical Configuration

Configuration Code	Heater Config.	Voltage	Phase	Wires	KW	Electrical Connection	Max Amp Draw	Gallon/Hour
US / CANADA								
C52246MIP	2 x 2.8 kW	220-240	1	2+G	4.8-5.7	Terminal Block	21.8-23.8	10.5-13.5 ⁽¹⁾
C52206MIP	3 x 4.0 kW	380-400	3	3+G	7.7-8.5	Terminal Block	11.7-12.3	15.0 ⁽¹⁾
C52196MIP	3 x 4.0 kW	440-480	3	3+G	10.3-12.1	Terminal Block	13.6-14.8	19.5-22.5 ⁽¹⁾

(1) Based on standard factory settings: 4.0 minute brew time; 0% prewet; 200°F water.



Water Specification

Water Inlet	Water Pressure	Minimum Flow Rate
3/8" Male Flare Fitting	20-75 psig	1 1/2 gpm



Dimensions

Type	Height	Width	Depth	Weight	Filled Weight
Product	36 5/8"	21 7/8"	20 1/2"	82 lbs	—
Shipping	35"	22"	27"	97 lbs	—



Customize Your Brewer

Dispensers



◀ 1.5 Gallon LUXUS® Thermal Server (L3S-15)
Must be used with S3S Serving Stations.

D052



◀ 1.5 Gallon LUXUS® Thermal Dispenser (L3D-15)

D049



◀ 1.5 Gallon LUXUS® Portable Thermal Dispenser (TPD-15)

D009

Accessories

Identifier Plates, Acrylic	A069
Single Serving Station for L3S-15/20 Server	A097
Twin Serving Station for L3S-15/20 Server	A098
Triple Serving Station for L3S-15/20 Server	A099
Drip Tray - Square	A137

Water Filtration System

Everpure® Filter System and Replacement Cartridges	See Page 50
BWT bestmax Filter System and Replacement Cartridges	See Page 50

Paper Coffee Filters

15" x 5.5" (500/Case)	F001
-----------------------	------



Features & Benefits

- 2 x 2.0 gallon size meets the high-volume demands of large-sized operations.
- Designed for simplicity, the Handle Operated series brewers save operator time and effort by delivering consistent results from your pre-programmed coffee recipe.
- Twin station configuration provides the flexibility of brewing two different recipes or into two different types of dispensers at the same time!
- Ample 2.0 gallon capacity is an excellent choice for high-volume service areas such as cruise ship dining rooms and galleys.
- Designed to brew directly into our best-selling LUXUS® L3D series portable dispensers and L3S series servers (sold separately).
- Available in multiple power configurations to efficiently meet your cups-per-hour requirement and keep energy costs at a minimum.



Approximate Cups Per Hour



+



475
8oz.

317
12oz.

238
16oz.

190
20oz.

Based on maximum power setting.



Electrical Configuration

Configuration Code	Heater Config.	Voltage	Phase	Wires	KW	Electrical Connection	Max Amp Draw	Gallon/Hour
US / CANADA								
C53216MIP	2 x 3.0 kW	220-240	1	2+G	5.1-6.1	Terminal Block	23.3-25.4	14.0 ⁽¹⁾
C53206MIP	3 x 4.0 kW	380-400	3	3+G	7.7-8.5	Terminal Block	11.7-12.3	18.0 ⁽¹⁾
C53226MIP	3 x 4.0 kW	440-480	3	3+G	10.3-12.1	Terminal Block	13.6-14.8	26.0 ⁽¹⁾
C53256MIP	3 x 2.0 kW	380-400	3	3+G	4.0-4.4	Terminal Block	6.0-6.3	-
C53236MIP	3 x 2.0 kW	440-480	3	3+G	5.3-6.1	Terminal Block	6.9-7.6	30.0 ⁽¹⁾

(1) Based on standard factory settings: 4.0 minute brew time; 0% prewet; 200°F water.



Water Specification

Water Inlet	Water Pressure	Minimum Flow Rate
3/8" Male Flare Fitting	20-75 psig	1 1/2 gpm



Dimensions

Type	Height	Width	Depth	Weight	Filled Weight
Product	39 1/4"	21 7/8"	20 1/2"	87 lbs	-
Shipping	38"	22"	27"	98 lbs	-



Customize Your Brewer

Dispensers



◀ 2.0 Gallon LUXUS® Thermal Server (L3S-20)

D053



◀ 2.0 Gallon LUXUS® Thermal Dispenser (L3D-20)

D050

Accessories

Identifier Plates, Acrylic	A069
Single Serving Station for L3S-15/20 Server	A097
Twin Serving Station for L3S-15/20 Server	A098
Triple Serving Station for L3S-15/20 Server	A099
Drip Tray - Square	A137

Water Filtration System

Everpure® Filter System and Replacement Cartridges	See Page 50
BWT bestmax Filter System and Replacement Cartridges	See Page 50

Paper Coffee Filters

15" x 5.5" (500/Case)	F001
-----------------------	------





Features & Benefits

- 2 x 3.0 gallon size meets the high-volume demands of large-scale maritime operations.
- IP44 rated coffee brewers are designed and constructed exclusively to withstand harsh conditions found in places such as cruise ship galleys and covered outdoor venues.
- Designed for simplicity, the Handle Operated series brewers save operators time and effort by delivering consistent results from your pre-programmed coffee recipe.
- Twin station configuration provides the flexibility of brewing two different recipes at the same time.
- Brew directly into the ultra durable TPD-30 thermal dispensers (sold separately).
- Available in multiple power configurations to efficiently meet your cups-per-hour requirement and keep energy costs at a minimum.



Approximate Cups Per Hour



Electrical Configuration

Configuration Code	Heater Config.	Voltage	Phase	Wires	KW	Electrical Connection	Max Amp Draw	Gallon/Hour
US / CANADA								
C62206MIP	3 x 3.0 kW	220-240	3	3+G	7.8-9.1	Terminal Block	20.5-22.4	9.0-12.0 ⁽¹⁾
C62196MIP	3 x 4.0 kW	440-480	3	3+G	10.3-12.1	Terminal Block	13.6-14.8	13.5-15.0 ⁽¹⁾
C62216MIP	3 x 4.0 kW	380-400	3	3+G	7.7-8.5	Terminal Block	11.7-12.3	22.5-24.0 ⁽¹⁾
C62186MIP	6 x 4.0 kW	440-480	3	3+G	20.1-24.1	Terminal Block	26.8-29.2	25.5-27.0 ⁽¹⁾

(1) Based on standard factory settings: 4.0 minute brew time; 0% prewet; 200°F water.



Water Specification

Water Inlet	Water Pressure	Minimum Flow Rate
3/8" Male Flare Fitting	20-75 psig	2 gpm



Dimensions

Type	Height	Width	Depth	Weight	Filled Weight
Product	40 ⁵ / ₈ "	35 ¹ / ₂ "	22 ⁷ / ₈ "	150 lbs	—
Shipping	43"	37"	24"	170 lbs	—



Customize Your Brewer

Dispensers



◀ 3.0 Gallon LUXUS®
Thermal Dispenser (TPD-30)

D012

Accessories

Identifier Plates, Acrylic	A069
Drip Tray - Square	A137
Water Filtration System	
Everpure® Filter System and Replacement Cartridges	See Page 50
BWT bestmax Filter System and Replacement Cartridges	See Page 50
Paper Coffee Filters	
20" x 8" (500 Per Case)	F004

► IP44-HWB-5 with IP44 PROTECTION | 5.0 Gallon Hot Water Dispenser

Features & Benefits

- 5.0 gallon size meets the demands of small- to medium-scale maritime operations.
- IP44 rated hot water dispensers are designed and constructed exclusively to withstand harsh conditions found in places such as cruise ship galleys and covered outdoor venues.
- 5.0 gallon size is ideal for light-duty food / beverage prep and cleaning tasks.

Approximate Cups Per Hour



Based on maximum power setting.



Electrical Configuration

Configuration Code	Heater Config.	Voltage	Phase	Wires	KW	Electrical Connection	Max Amp Draw	Gallon/Hour
US / CANADA								
H05041MIP	3.0 kW	220-240	1	2+G	2.6-3.1	Terminal Block	11.8-12.9	6.0-7.0 ⁽¹⁾

(1) Based on standard factory settings: 200°F water.

Water Specification

Water Inlet	Water Pressure	Minimum Flow Rate
3/8" Male Flare Fitting	20-75 psig	3/4 gpm

Dimensions

Type	Height	Width	Depth	Weight	Filled Weight
Product	29 ⁵ / ₈ "	10 ¹ / ₈ "	23 ⁵ / ₈ "	47 lbs	–
Shipping	31"	11"	26"	57 lbs	–

► IP44-HWB-10 with IP44 PROTECTION | 10.0 Gallon Hot Water Dispenser

Features & Benefits

- 10.0 gallon size meets the demands of medium- to large-scale maritime operations.
- IP44 rated hot water dispensers are designed and constructed exclusively to withstand harsh conditions found in places such as cruise ship galleys and covered outdoor venues.
- 10.0 gallon size is ideal for light- to medium-duty food / beverage prep and cleaning tasks.

Approximate Cups Per Hour



Based on maximum power setting.



Electrical Configuration

Configuration Code	Heater Config.	Voltage	Phase	Wires	KW	Electrical Connection	Max Amp Draw	Gallon/Hour
US / CANADA								
H10031MIP	2 x 3.0 kW	220-240	3	3+G	5.1-6.1	Terminal Block	11.8-12.9	13.0-15.0 ⁽¹⁾

(1) Based on standard factory settings: 200°F water.

Water Specification

Water Inlet	Water Pressure	Minimum Flow Rate
3/8" Male Flare Fitting	20-75 psig	3/4 gpm

Dimensions

Type	Height	Width	Depth	Weight	Filled Weight
Product	29 ⁵ / ₈ "	16 ¹ / ₈ "	23 ⁵ / ₈ "	64 lbs	–
Shipping	31"	18"	26"	79 lbs	–

Customize Your Dispenser

Accessories

Drip Tray - Square

A137

Water Filtration System

Everpure® Filter System and Replacement Cartridges
BWT bestmax Filter System and Replacement Cartridges

See Page 50
See Page 50

▶ Touch Operated Hot Water Dispensers

The new face of hot water dispensing has arrived at FETCO®. The new HWD dispenser series is perfect whether you need a front-of-house self serve solution to prepare coffee, tea, oatmeal, and instant beverages, or back-of-house solution that relies on hot water. The newly-designed HWD dispenser series meets FETCO's exacting standards of innovation, reliability, durability and quality. It delivers form, function and flexibility like no other on the market today.

▶ Standard Features:

- 1 Temperature Settings**
Can be adjusted at the touch of a button on the sleek and modern face panel.
- 2 High Resolution Display**
Provides easy navigation and instant feedback and SD card slot allows the operator to easily update software and maintain optimal performance.
- 3 Touch Dispensing**
A soft red halo appears around the button when it is ready to dispense hot water.
- 4 Soft Silicone Tap**
Silicone tap is designed to protect glass and ceramic serveware against damage.
- 5 Convenient Float Indicator**
Built into drip tray to help simplify maintenance and cleaning.



▶ Pull Faucet Operated Hot Water Dispensers

The industry standard, the HWB series hot water dispensers come in a variety of sizes for all types of food / beverage prep and cleaning tasks. Built to the highest quality standards, this dispenser easily handles the rigors of everyday use and delivers years of reliable service.



▶ Standard Features:

- 1 Ready Light Indicator**
The green "Ready" indicator illuminates when hot water is ready to dispense at your pre-programmed temperature.
- 2 Durable Stainless Steel Construction**
Easily handles the rigors of everyday use and is exceptionally easy to clean and sanitize.
- 3 Tank Insulation**
The interior top and sides of the unit are fully insulated to maximize heat retention, improve overall energy efficiency and allows for cool outer surface.
- 4 Controlled Refill**
This feature helps you manage recovery time to ensure for a continuous flow of hot water during your operations' peak service times.

▶ Touchscreen Hot Water Dispenser

The HWB-2100 series combines the simplicity of a traditional style pull faucet with the modern convenience of a touchscreen interface. The touchscreen allows for easy access to temperature controls, dispense metrics and diagnostics while the simple screen layout makes it easy for staff to understand and operate.

▶ Standard Features:

- 1 Energy Efficient**
The top and sides are fully insulated to maximize heat retention, improve overall energy efficiency and keeps the outer surfaces cool.
- 2 Touchscreen Simplicity**
Touchscreen interface for easy access to temperature controls, metrics and diagnostics.
- 3 Form & Function**
Mix material construction is durable for the rigors of back-of-house and attractive enough for any front-of-house décor.
- 4 SD Card Slot**
Built-in slot accepts SD cards for loading the latest software updates.
- 5 Traditional Faucet Style**
Pull faucet with a soft silicone tap is designed to protect glass and ceramic serveware against damage.
- 6 Ease of Use**
Ample clearance for large containers.
- 7 Top Quality Materials**
Constructed from durable stainless steel, it can handle the rigors of everyday use and is exceptionally easy to clean and sanitize.



▶ HWD-2102

SINGLE TEMPERATURE

2.0 Gallon Hot Water Dispenser

↔ Dimensions

Type	Height	Width	Depth	Weight	Filled Weight
Product	19 ¹ / ₃₂ "	8"	16 ¹ / ₈ "	19 lbs	36 lbs
Shipping	26"	13"	17"	25 lbs	—

☕ Approximate Cups Per Hour



⚡ Electrical Configuration

Configuration Code	Heater Config.	Voltage	Phase	Wires	KW	Electrical Connection	Max Amp Draw	Gallon/Hour
US / CANADA								
H210210	1 x 1.44kW	100-120	1	2+G	1.5	NEMA 5-15P	12.5	3.6 ⁽¹⁾
H210220	1 x 2.1 kW	100-120	1	2+G	2.2	NEMA 5-20P	18.3	5.4 ⁽¹⁾
H210230	1 x 3.2 kW	200-240	1	2+G	3.3	NEMA 6-15P	13.8	8.2 ⁽¹⁾

Portion size can be controlled by dispense time. Range: 4-40 seconds.

Maximum single dispense is 1570cc / 53 ounces in 40 seconds (maximum dispense time).

Temperature ranges selectable from 122°-207°F / 50°-97°C.

(1) Flow rate based on 55°F / 13°C water main supply temperature and dispensing from "READY" light ON.

💧 Water Specification

Water Inlet	Water Pressure	Minimum Flow Rate
1/4" Male Flare Fitting	20-75 psig	1 1/2 gpm

▶ HWD-2105

SINGLE TEMPERATURE

5.0 Gallon Hot Water Dispenser

↔ Dimensions

Type	Height	Width	Depth	Weight	Filled Weight
Product	24 ¹ / ₂ "	9"	18 ¹ / ₂ "	22 lbs	49 lbs
Shipping	30"	14"	19"	33 lbs	—

☕ Approximate Cups Per Hour



⚡ Electrical Configuration

Configuration Code	Heater Config.	Voltage	Phase	Wires	KW	Electrical Connection	Max Amp Draw	Gallon/Hour
US / CANADA								
H210511	1 x 1.44kW	120	1	2+G	1.5	NEMA 5-15P	12.0	4.0 ⁽¹⁾
H210521	1 x 2.1 kW	120	1	2+G	2.2	NEMA 5-20P	17.5	5.7 ⁽¹⁾
H210531	1 x 3.2 kW	200-240	1	2+G	2.3-3.3	NEMA 6-15P	11.2-13.3	6.0-8.7 ⁽¹⁾

Temperature ranges selectable from 158°-203°F / 70°-95°C based on 207°F / 97°C hot water tank temperature.

Temperature displayed in F or C.

(1) Five gallon per hour flow rate based on 65°-70° / 18°-21°C water main supply temperature at lowest possible power supply current.

💧 Water Specification

Water Inlet	Water Pressure	Minimum Flow Rate
1/4" Male Flare Fitting	40-75 psig	1 1/2 gpm

▶ HWD-2110

SINGLE TEMPERATURE

10.0 Gallon Hot Water Dispenser

↔ Dimensions

Type	Height	Width	Depth	Weight	Filled Weight
Product	24 ¹ / ₂ "	10"	19 ¹ / ₂ "	30 lbs	69 lbs
Shipping	30"	15"	21"	44 lbs	—

☕ Approximate Cups Per Hour



⚡ Electrical Configuration

Configuration Code	Heater Config.	Voltage	Phase	Wires	KW	Electrical Connection	Max Amp Draw	Gallon/Hour
US / CANADA								
H211011	1 x 5.0 kW	200-240	1	2+G	3.6-5.1	NEMA 6-30P	17.4-21.0	9.5-13.5 ⁽¹⁾

Temperature ranges selectable from 158°-203°F / 70°-95°C based on 207°F / 97°C hot water tank temperature.

Temperature displayed in F or C.

(1) Ten gallon per hour flow rate based on 65°-70° / 18°-21°C water main supply temperature at lowest possible power supply current.

💧 Water Specification

Water Inlet	Water Pressure	Minimum Flow Rate
1/4" Male Flare Fitting	40-75 psig	1 1/2 gpm

► HWD-2105 TOD

TEMPERATURE ON DEMAND | 5.0 Gallon Hot Water Dispenser



Features & Benefits

- 5.0 gallon size meets the demands of small-scale operations.
- This revolutionary hot water dispenser is designed to dispense water at four different temperatures at the touch of a button.
- 5.0 gallon size is ideal for light-duty food / beverage prep.



Approximate Cups Per Hour

125
8oz.83
12oz.62
16oz.50
20oz.

Based on maximum power setting.



Electrical Configuration

Configuration Code	Heater Config.	Voltage	Phase	Wires	KW	Electrical Connection	Max Amp Draw	Gallon/Hour
US / CANADA								
H210510	1 x 1.44kW	120	1	2+G	1.5	NEMA 5-15P	12.0	4.0 ⁽¹⁾
H210520	1 x 2.1 kW	120	1	2+G	2.2	NEMA 5-20P	17.5	5.7 ⁽¹⁾
H210530	1 x 3.2 kW	200-240	1	2+G	2.3-3.3	NEMA 6-15P	11.2-13.3	6.0-8.7 ⁽¹⁾

Temperature ranges selectable from 158°-203°F / 70°-95°C based on 207°F / 97°C hot water tank temperature. Four selectable hot water dispense temperatures. Temperature displayed in F or C.
 (1) Five gallon per hour flow rate based on 65°-70° / 18°-21°C water main supply temperature at lowest possible power supply current.



Water Specification

Water Inlet	Water Pressure	Minimum Flow Rate
1/4" Male Flare Fitting	40-75 psig	1 1/2 gpm



Dimensions

Type	Height	Width	Depth	Weight	Filled Weight
Product	24 1/2"	9"	18 1/2"	22 lbs	49 lbs
Shipping	30"	14"	19"	33 lbs	—

► HWD-2110 TOD

TEMPERATURE ON DEMAND | 10.0 Gallon Hot Water Dispenser



Features & Benefits

- 10.0 gallon size meets the demands of small- to medium-scale operations.
- This revolutionary hot water dispenser is designed to dispense water at four different temperatures at the touch of a button.
- 10.0 gallon size is the ideal size for light- to medium-duty food / beverage prep.



Approximate Cups Per Hour

195
8oz.130
12oz.98
16oz.78
20oz.

Based on maximum power setting.



Electrical Configuration

Configuration Code	Heater Config.	Voltage	Phase	Wires	KW	Electrical Connection	Max Amp Draw	Gallon/Hour
US / CANADA								
H211010	1 x 5.0 kW	200-240	1	2+G	3.6-5.1	NEMA 6-30P	17.4-21.0	9.5-13.5 ⁽¹⁾

Temperature ranges selectable from 158°-203°F / 70°-95°C based on 207°F / 97°C hot water tank temperature. Four selectable hot water dispense temperatures. Temperature displayed in F or C.
 (1) Ten gallon per hour flow rate based on 65°-70° / 18°-21°C water main supply temperature at lowest possible power supply current.



Water Specification

Water Inlet	Water Pressure	Minimum Flow Rate
1/4" Male Flare Fitting	40-75 psig	1 1/2 gpm



Dimensions

Type	Height	Width	Depth	Weight	Filled Weight
Product	24 1/2"	10"	19 1/2"	30 lbs	69 lbs
Shipping	30"	15"	21"	38 lbs	—



Customize Your Dispenser

Water Filtration System

Everpure® Filter System and Replacement Cartridges
 BWT bestmax Filter System and Replacement Cartridges

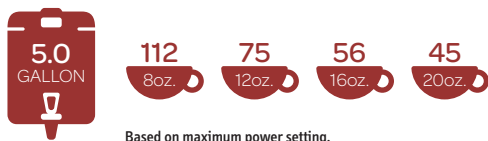
See Page 50
 See Page 50

► HWB-2105 5.0 Gallon Touchscreen Hot Water Dispenser

Features & Benefits

- 5.0 capacity to meets the demands of small-scale operations.
- Touchscreen interface with simple screen layout for easy access to temperature controls, metrics and diagnostics.
- 5.0 gallon size is ideal for light-duty food / beverage prep and cleaning tasks.

Approximate Cups Per Hour



Available Q3-2014
Contact Your FETCO Sales Representative for Details



Electrical Configuration

Configuration Code	Heater Config.	Voltage	Phase	Wires	KW	Electrical Connection	Max Amp Draw	Gallon/Hour
US / CANADA								
B210551	1 x 3.0 kW	208-240	1	2+G	3.1	Terminal Block	12.9	5.0 ⁽¹⁾
B210552	1 x 4.0 kW	208-240	1	2+G	4.1	Terminal Block	17.1	5.0 ⁽¹⁾

(1) Based on standard factory settings: 200°F water.

Water Specification

Water Inlet	Water Pressure	Minimum Flow Rate
3/8" Male Flare Fitting	20-75 psig	1 1/2 gpm

Dimensions

Type	Height	Width	Depth	Weight	Filled Weight
Product	31 1/2"	8"	22 1/4"	29 lbs	55 lbs
Shipping	35"	11"	25"	44 lbs	—

► HWB-2110 10.0 Gallon Touchscreen Hot Water Dispenser

Features & Benefits

- 10.0 capacity to meets the demands of small-to-medium scale operations.
- Touchscreen interface with simple screen layout for easy access to temperature controls, metrics and diagnostics.
- 10.0 gallon size is ideal for light-to-medium duty food / beverage prep and cleaning tasks.

Approximate Cups Per Hour



Available Q3-2014
Contact Your FETCO Sales Representative for Details



Electrical Configuration

Configuration Code	Heater Config.	Voltage	Phase	Wires	KW	Electrical Connection	Max Amp Draw	Gallon/Hour
US / CANADA								
B211051	2 x 3.0 kW	208-240	1	2+G	6.1	Terminal Block	25.4	10.0 ⁽¹⁾
B211052	2 x 4.0 kW	208-240	1	2+G	8.1	Terminal Block	33.8	10.0 ⁽¹⁾

(1) Based on standard factory settings: 200°F water.

Water Specification

Water Inlet	Water Pressure	Minimum Flow Rate
3/8" Male Flare Fitting	20-75 psig	1 1/2 gpm

Dimensions

Type	Height	Width	Depth	Weight	Filled Weight
Product	31 1/2"	19 3/4"	22 1/4"	47 lbs	92 lbs
Shipping	35"	15"	27"	59 lbs	—

Customize Your Dispenser

Accessories

Drip Tray - Square **A137**

Water Filtration System

Everpure® Filter System and Replacement Cartridges
BWT bestmax Filter System and Replacement Cartridges

See Page 50
See Page 50

► HWB-15 15.0 Gallon Hot Water Dispenser

Features & Benefits

- 15.0 gallon size meets the demands of medium- to large-scale operations.
- Built to the highest-quality standards, this dispenser easily handles the rigors of everyday use and delivers years of reliable service.
- 15.0 gallon size is ideal for medium- to heavy-duty food / beverage prep and cleaning tasks.

Approximate Cups Per Hour



356 8oz. 237 12oz. 178 16oz. 142 20oz.

Based on maximum power setting.



Electrical Configuration

Configuration Code	Heater Config.	Voltage	Phase	Wires	KW	Electrical Connection	Max Amp Draw	Gallon/Hour
US / CANADA								
H15011	2 x 3.0 kW	120/208-240	1	3+G	4.6-6.1	Terminal Block	22.0-25.4	11.0-15.0 ⁽¹⁾
H15021 ⁽²⁾	3 x 3.0 kW	120/208-240	3	4+G	7.0-9.1	Terminal Block	19.4-22.4	17.0-22.0 ⁽¹⁾

(1) Based on standard factory settings: 200°F water.

(2) Requires 3 phase upcharge.

Water Specification

Water Inlet	Water Pressure	Minimum Flow Rate
3/8" Male Flare Fitting	20-75 psig	3/4 gpm

Dimensions

Type	Height	Width	Depth	Weight	Filled Weight
Product	29 ⁵ / ₈ "	20 ¹ / ₈ "	27 ³ / ₄ "	70 lbs	—
Shipping	33"	24"	28"	105 lbs	—

► HWB-25 25.0 Gallon Hot Water Dispenser

Features & Benefits

- 25.0 gallon size meets the demands of large-scale operations.
- Built to the highest-quality standards, this dispenser easily handles the rigors of everyday use and delivers years of reliable service.
- 25.0 gallon size is ideal for heavy-duty food / beverage prep and cleaning tasks.

Approximate Cups Per Hour



960 8oz. 640 12oz. 480 16oz. 384 20oz.

Based on maximum power setting.



Electrical Configuration

Configuration Code	Heater Config.	Voltage	Phase	Wires	KW	Electrical Connection	Max Amp Draw	Gallon/Hour
US / CANADA								
H25011	6 x 3.0 kW	120/208-240	3	4+G	13.8-18.1	Terminal Block	38.2-44.0	34.0-45.0 ⁽¹⁾
H25021	6 x 4.0 kW	120/208-240	3	4+G	18.3-24.1	Terminal Block	50.7-58.5	45.0-60.0 ⁽¹⁾

(1) Based on standard factory settings: 200°F water.

Water Specification

Water Inlet	Water Pressure	Minimum Flow Rate
3/8" Male Flare Fitting	20-75 psig	3/4 gpm

Dimensions

Type	Height	Width	Depth	Weight	Filled Weight
Product	29 ⁵ / ₈ "	28 ¹ / ₈ "	27 ³ / ₄ "	119 lbs	—
Shipping	33"	37"	32"	160 lbs	—

Customize Your Dispenser

Accessories

Drip Tray - Square

A137

Water Filtration System

Everpure® Filter System and Replacement Cartridges
BWT bestmax Filter System and Replacement Cartridges

See Page 50
See Page 50

▶ Portion Controlled Coffee Grinders

FETCO® recognizes that the way coffee is ground is just as important as the type of bean it is. The powerful, high-quality GR Series grinders are built to effortlessly transform the raw coffee bean into the perfect grind profile with the touch of a button. Constructed out of durable stainless steel, these programmable grinders consistently perform their daily tasks to the high standards you expect from FETCO® commercial equipment.

▶ Standard Features:

1 Batch Size Buttons

Depending on the model, you can save prep time by assigning a specific batch size on up to 3 separate buttons.

2 Slice Grinding

Precision slice grinding discs help deliver uniform grind profiles for even and consistent water flow over the coffee grounds.

3 Portion Control

Grind only the amount you need to save time.

4 Hopper Design

Unique internal slanted wall design and anti-static chambers allow beans to efficiently move into the grinder chamber without clogging.

5 Grind Platform

Designed to securely hold XTS™, EXTRACTOR® and 5000 series brew baskets under the chute during the grind process. For larger models, it is possible to grind directly into the paper coffee filter.



► GR-1.2 / 1.3

PORTION CONTROL COFFEE GRINDER | Single Hopper



Features & Benefits

- Single hopper design has a generous 15 lbs. capacity which means you spend less time filling the hopper and more time serving your high-volume recipes.
- Select GR 1.2 to grind up to 2 different batch sizes with the touch of a button.
- Select GR 1.3 to grind up to 3 different batch sizes with the touch of a button.
- Brew basket sold separately.



Electrical Configuration

Configuration Code	Motor Power	Voltage	Phase	Wires	KW	Electrical Connection	Max Amp Draw	Hopper Capacity	Grind Rate (Medium)
US / CANADA									
G01012 / G01013	0.5Hp	120	1	2+G	0.37	Terminal Block	5.7	15 lbs	18 oz./min



Customize Your Grinder

Accessories

Brew Basket Scoop - 16" x 6"	A088
------------------------------	------



Dimensions

Type	Height	Width	Depth	Weight	Filled Weight
Product	28 1/2"	9 1/4"	11 1/2"	50 lbs	—
Shipping	31"	12"	19"	65 lbs	—

► GR-2.2 / 2.3

PORTION CONTROL COFFEE GRINDER | Dual Hopper



Features & Benefits

- The dual 5 lb. capacity hoppers are simple to remove for refilling and storage and allow for versatility in your flavor offerings.
- Select the GR 2.2 to grind up to 4 different batch sizes with the touch of a button.
- Select the GR 2.3 to grind up to 6 different batch sizes with the touch of a button.
- Anti-static grind chambers empty completely of whole beans and ground coffee to prevent unwanted mixing of flavors.
- Brew basket sold separately.



Electrical Configuration

Configuration Code	Motor Power	Voltage	Phase	Wires	KW	Electrical Connection	Max Amp Draw	Hopper Capacity	Grind Rate (Medium)
US / CANADA									
G02012 / G02013	0.5Hp	120	1	2+G	0.37	Terminal Block	5.7	5 lbs	18 oz./min



Customize Your Grinder

Accessories

Replacement / Extra Hopper w/ lid for GR2.2 & GR2.3	A066
Brew Basket Scoop - 16" x 6"	A088
Hopper Storage Rack for GR 2.2 and GR 2.3 (Mounts directly to either side of grinder)	A118



Dimensions

Type	Height	Width	Depth	Weight	Filled Weight
Product	28 1/2"	9 1/4"	11 1/2"	50 lbs	—
Shipping	31"	12"	19"	65 lbs	—

► LUXUS® Thermal Dispensers

Since its introduction in 1987, the award winning LUXUS® dispenser line remains the benchmark of beverage freshness and portable coffee serving solutions. From the 0.5 gallon Tabletop Server to the ultra high capacity 24 gallon twin station dispenser, FETCO® has a portable, thermal solution for your coffee service needs.

► L3D Series Dispensers & L3S Series Servers

Stainless Steel Vacuum Liner

Superior retention of heat, freshness and flavor.

Freshness Timer® and Volume Indicator

Helps you monitor liquid levels to maintain fresh, uninterrupted beverage service.

Durable Stainless Steel Outer Body Construction

Withstands harsh conditions associated with daily use, cleaning, handling and transportation.

L3D Integrated Brew Stand and Drip Tray

Quickly turns any available counter space into an instant service area.

L3S Modularity

Single, double or triple serving stations (sold separately) so you can customize your hot beverage display.



► TPD Series Dispensers

Fully Insulated

Superior retention of heat, freshness and flavor.

Vertical Sight Glass

Instantly communicates how much liquid remains in the dispenser to help maintain fresh, uninterrupted beverage service.

Twist Top Cover and Locking Lid

Locks-in freshness, flavors and maximum temperatures during holding time and transportation.

Durable Stainless Steel Outer Body Construction

Withstands harsh conditions associated with daily use, cleaning, handling and transportation.



► LBD Series Dispensers

Durable Stainless Steel Outer Body Construction

Withstands harsh conditions associated with daily use, cleaning, handling and transportation.

Stainless Steel Vacuum Liner

Superior retention of heat, freshness and flavor.

Flow Through Lid

Brew directly into the dispenser and never remove the lid except to clean.

Vertical Sight Glass

Instantly communicates how much liquid remains in the dispenser to help maintain fresh, uninterrupted beverage service.



► 1.9L SERVER

LOW PROFILE TABLETOP SERVER | 1.9 Liter



Features & Benefits

- From the backroom to the boardroom, this attractive low-profile shaped dispenser fits well in any decor or level of service.
- Dual-layer vacuum insulation keeps liquids hot for hours inside while the outer surface of the server stays cool to the touch.
- Constructed of brushed stainless steel and polypropylene, this server is durable, attractive and easy to clean.



Dimensions

Type	Height	Width	Depth	Weight
Product	7 ¹ / ₄ "	6 ³ / ₄ "	9 ¹ / ₄ "	1.9 lbs
Shipping	7 ³ / ₄ "	7 ¹ / ₄ "	8 ³ / ₄ "	2.3 lbs



► D055



► 1.9L SERVER

TALL TABLETOP SERVER | 1.9 Liter



Features & Benefits

- The traditional pitcher shape with comfortable, ergonomic handle allows for precision cup pouring and easy maneuvering around crowded dining tables.
- Dual-layer vacuum insulation keeps liquids hot for hours inside while the outer surface of the server stays cool to the touch.
- Constructed of brushed stainless steel and polypropylene, this server is durable, attractive and easy to clean.



Dimensions

Type	Height	Width	Depth	Weight
Product	11 ¹ / ₂ "	5 ¹ / ₄ "	6 ⁵ / ₈ "	2.1 lbs
Shipping	14"	6"	8"	3 lbs



► D037



► 3.0L SERVER

PUMP LEVER AIRPOT | 3.0 Liter



Features & Benefits

- Economical, convenient and safe solution for self-serve beverage dispensing.
- Brew directly into the airpot for a quick and convenient return to service.
- Pump lever allows for precise dispensing without lifting, holding or tilting the airpot.
- Small footprint allows for multiple flavor offerings in limited space.



Dimensions

Type	Height	Width	Depth	Weight
Product	14 ⁵ / ₈ "	7"	9"	4.6 lbs
Shipping	15"	8"	10"	6 lbs



► D041



► 1.0G SERVER

PUMP LEVER AIRPOT | 1.0 Gallon



Features & Benefits

- Economical, convenient and safe solution for self-serve beverage dispensing.
- Brew directly into the airpot for a quick and convenient return to service.
- Pump lever allows for precise dispensing without lifting, holding or tilting the airpot.
- Small footprint allows for multiple flavor offerings in limited space.



Dimensions

Type	Height	Width	Depth	Weight
Product	18 ¹ / ₂ "	7"	9"	9 lbs
Shipping	19"	8"	10"	10.5 lbs



► D063





► **L3S-10** LUXUS® THERMAL SERVER | 1.0 Gallon

💡 **Features & Benefits**

- The space friendly, self-serve choice for hotel lobbies, breakrooms, office coffee service and C-Stores.
- L3S-10 is most compatible with 1.0 gallon XTS™ series touchscreen coffee brewers.
- May be used with 1.0 gallon CBS-2140 series coffee brewers but requires a serving station (see below, sold separately).

📏 **Dimensions**

Type	Height	Width	Depth	Weight
Product	13 ⁵ / ₁₆ "	8"	10 ¹ / ₄ "	5.6 lbs
Shipping	15"	16"	12"	9 lbs



► **D051**



► **L3S-15** LUXUS® THERMAL SERVER | 1.5 Gallon

💡 **Features & Benefits**

- Our best-selling self-serve choice for cafeterias, quick serve and casual restaurants, large OCS, banquets and meeting rooms.
- L3S-15 may be used with all 1.5 gallon coffee brewers but requires a serving station (see below, sold separately).

📏 **Dimensions**

Type	Height	Width	Depth	Weight
Product	14 ¹ / ₂ "	9"	11 ¹ / ₄ "	7.2 lbs
Shipping	16"	17"	13"	10 lbs



► **D052**



► **L3S-20** LUXUS® THERMAL SERVER | 2.0 Gallon

💡 **Features & Benefits**

- The high-volume self-serve choice for cafeterias, airports, casinos, large banquet and meeting rooms.
- L3S-20 may be used with all 2.0 gallon coffee brewers but requires a serving station (see below, sold separately).

📏 **Dimensions**

Type	Height	Width	Depth	Weight
Product	16 ¹ / ₄ "	9"	11 ¹ / ₄ "	8.3 lbs
Shipping	21"	17"	13"	12 lbs



► **D053**



► **S3S SERVING STATION** FOR L3S LUXUS® THERMAL SERVERS

- Stations are available in 1, 2 or 3 stand configurations.
- Sold separately from dispensers.



► **A093**

S3S-10-1 Single Serving Station for L3S-10

► **A097**

S3S-15/20-1 Single Serving Station for L3S-15 & L3S-20



► **A094**

S3S-10-2 Twin Serving Station for L3S-10

► **A098**

S3S-15/20-2 Twin Serving Station for L3S-15 & L3S-20



► **A096**

S3S-10-3 Triple Serving Station for L3S-10

► **A099**

S3S-15/20-3 Triple Serving Station for L3S-15 & L3S-20



Example of L3S Dispensers on Serving Station.

► L3D-10 LUXUS® THERMAL DISPENSER | 1.0 Gallon

☀ Features & Benefits

- The space friendly, self-serve choice for hotel lobbies, breakrooms, office coffee service and C-Stores.
- L3D-10 is compatible with 1.0 gallon CBS-2140 series coffee brewers.

↔ Dimensions

Type	Height	Width	Depth	Weight
Product	21 ¹ / ₂ "	8"	11 ³ / ₄ "	8 lbs
Shipping	23"	16"	13"	12 lbs



► D048



► L3D-15 LUXUS® THERMAL DISPENSER | 1.5 Gallon

☀ Features & Benefits

- Our best-selling self-serve choice for cafeterias, quick serve and casual restaurants, large OCS, banquets and meeting rooms.
- L3D-15 is compatible with all 1.5 gallon XTS™, Handle Operated and IP44 / Maritime series coffee brewers.

↔ Dimensions

Type	Height	Width	Depth	Weight
Product	22 ⁷ / ₈ "	9"	13 ¹ / ₄ "	10.5 lbs
Shipping	25"	17"	13"	14 lbs



► D049



► L3D-20 LUXUS® THERMAL DISPENSER | 2.0 Gallon

☀ Features & Benefits

- The high-volume self-serve choice for cafeterias, airports, casinos, large banquet and meeting rooms.
- L3D-20 is compatible with all 2.0 gallon EXTRACTOR®, Handle Operated and IP44 / Maritime series coffee brewers.

↔ Dimensions

Type	Height	Width	Depth	Weight
Product	25"	9"	13 ¹ / ₄ "	11.5 lbs
Shipping	27"	17"	13"	16 lbs



► D050





► TPD-15 LUXUS® PORTABLE THERMAL DISPENSER | 1.5 Gallon

💡 Features & Benefits

- The popular 1.5 gallon size dispenser is compatible with all FETCO® 1.5 and 2 x 1.5 gallon XTSM™, Handle Operated and IP44 Maritime series brewers.
- The TPD series allows you to confidently extend your high-quality beverage service into virtually any remote service environment.
- Interior construction features a high-quality thermal liner with superior insulative properties for optimum retention of hot or cold temperatures.
- Rugged stainless steel outer body construction withstands harsh conditions associated with daily use, cleaning, handling and transportation.
- Designed for portability, each dispenser features 2 vertical comfort-grip carry handles mounted permanently to the sides with an additional handle built in to the locking twist top cover.
- Literally lock-in freshness, flavors and maximum holding temperatures during transportation with the exclusive twist top cover with safety lock feature.
- Front-mounted sight glass allows the operator to monitor internal liquid levels to help maintain uninterrupted beverage service.

↔ Dimensions

Type	Height	Width	Depth	Weight
Product	24 ¹ / ₈ "	9 ⁵ / ₁₆ "	13 ⁷ / ₈ "	12.8 lbs
Shipping	26"	10"	14"	15 lbs



► D009



► TPD-30 LUXUS® PORTABLE THERMAL DISPENSER | 3.0 Gallon

💡 Features & Benefits

- The popular 3.0 gallon size dispenser is compatible with all FETCO® 3.0 and 2 x 3.0 gallon EXTRACTOR®, Handle Operated and IP44 Maritime series brewers.
- The TPD series allows you to confidently extend your high-quality beverage service into virtually any remote service environment.
- Interior construction features a high-quality thermal liner with superior insulative properties for optimum retention of hot or cold temperatures.
- Rugged stainless steel outer body construction withstands harsh conditions associated with daily use, cleaning, handling and transportation.
- Designed for portability, each dispenser features 2 horizontal comfort-grip carry handles mounted permanently to the sides with an additional handle built in to the locking twist top cover.
- Literally lock-in freshness, flavors and maximum holding temperatures during transportation with the exclusive twist top cover with safety lock feature.
- Front-mounted sight glass allows the operator to monitor internal liquid levels to help maintain uninterrupted beverage service.

↔ Dimensions

Type	Height	Width	Depth	Weight
Product	22 ⁵ / ₁₆ "	11"	15 ¹ / ₂ "	18.1 lbs
Shipping	28"	16"	14"	21 lbs



► D012



🛒 Customize Your LUXUS® Dispenser

Accessories

Drip Tray - Square

A137

► ITD-2135 ICED TEA DISPENSER | 3.5 Gallon

💡 Features & Benefits

- Compatible with FETCO's TBS-2121 Iced Tea Brewer (Sold separately).
- Elegant slim design is attractive and uses minimal counter space.
- Welded flat front handle distributes weight across your fingers and provides a comfortable grip.
- Stainless steel body construction is scratch resistant, durable and easy to clean.

↔ Dimensions

Type	Height	Width	Depth	Weight
Product	21 ¹ / ₂ "	6 ³ / ₄ "	16 ³ / ₄ "	9 lbs
Shipping	22"	7"	17"	10.5 lbs



► D064W112



► D064



► LBD-6 LUXUS® THERMAL DISPENSER | 6.0 Gallon

☀ Features & Benefits

- FETCO® is the only equipment manufacturer offering ultra-high-volume brewing and dispensing solutions.
- Incredible 6.0 gallon capacity dispenser is the only choice for large banquet facilities, convention halls, stadiums and hospitality venues.
- Fits directly onto dispenser slide systems of #71A and #72A ultra-high-volume brewers or use with #A018 remote coffee service station (all sold separately).

↔ Dimensions

Type	Height	Width	Depth	Weight
Product	16 ³ / ₄ "	17 ¹ / ₂ "	21 ³ / ₄ "	40 lbs
Shipping	26"	24"	23"	40 lbs



► D019



► LBD-6C MOBILE LUXUS® THERMAL DISPENSER | 6.0 Gallon

☀ Features & Benefits

- FETCO® is the only equipment manufacturer offering ultra-high-volume brewing and dispensing solutions.
- Incredible 6.0 gallon capacity dispenser is the only choice for large banquet facilities, convention halls, stadiums and hospitality venues.
- Dispenser is mounted permanently to rolling shelf/cart system for easy placement in brew station and transportation to dispense location.

↔ Dimensions

Type	Height	Width	Depth	Weight
Product	53 ¹ / ₂ "	18"	30"	228 lbs
Shipping	62"	42"	48"	228 lbs



► D020



► LBD-18 MOBILE LUXUS® THERMAL DISPENSER | 18.0 Gallon

☀ Features & Benefits

- Enormous 18.0 gallon capacity dispenser is the only choice for large banquet facilities, convention halls, stadiums and hospitality venues.
- Dispenser is mounted permanently to rolling shelf/cart system for easy placement in brew station and transportation to service location.
- Double faucet configuration on a single unit saves premium serving space and accommodates the dual brewing capabilities of CBS-72AC high-volume coffee brewer.

↔ Dimensions

Type	Height	Width	Depth	Weight
Product	53 ¹ / ₂ "	38 ³ / ₄ "	26 ¹ / ₄ "	315 lbs
Shipping	62"	48"	42"	315 lbs



► D021



► LBD-24 MOBILE LUXUS® THERMAL DISPENSER | 24.0 Gallon

☀ Features & Benefits

- Amazing 24.0 gallon capacity dispenser is the only choice for large banquet facilities, convention halls, stadiums and large hospitality venues.
- Dispenser is mounted permanently to rolling shelf / cart system for easy placement in brew station and transportation to dispense location.
- Triple faucet configuration helps prevent coffee service downtime by allowing multiple dispensers to be refilled at the same time.
- Shown with TPD-30 (sold separately).

↔ Dimensions

Type	Height	Width	Depth	Weight
Product	53 ¹ / ₂ "	38 ³ / ₄ "	26 ¹ / ₄ "	310 lbs
Shipping	62"	48"	42"	310 lbs



► D022



► Customize Your Equipment

Utilize your equipment to its maximum potential with an extensive line of upgrades, add-on's, accessories and options, sold separately.



Accessorize...

Accessories like tea infusers (shown), drip trays and equipment stands are designed to make the operator's job easier so they can focus on providing great service.



Filterize...

Paper filters are essential to making the perfect cup of coffee and filtration systems are critical for extending the life of your brewer.



Merchandise...

Ensure your beverage presentation is organized, accessible and easy to service with serving stations or elegant merchandising racks.



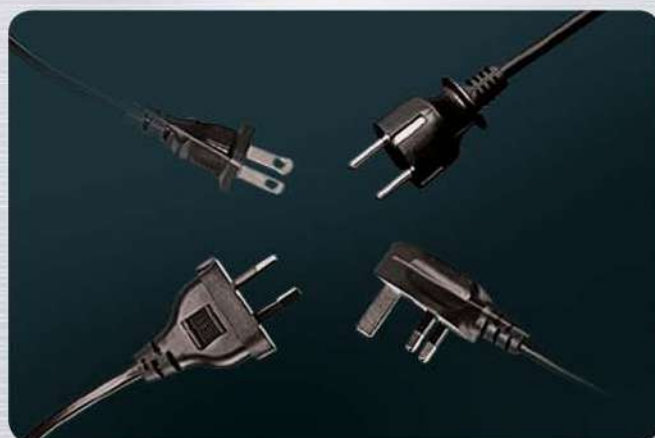
Customize...

Customizable elements like graphic dispenser wraps are a great way to enhance your coffee presentation.



Colorize...

Change the color faucet handles to provide quick visual identification of specific equipment functions.



Powerize...

Step up for a 3 phase power source or step down to lower the voltage - either way FETCO® can help you configure your brewer for the optimum efficiency and operation.

► PAPER COFFEE FILTERS

Brewer	SKU #	Specification	Count	Weight	Shipping Dimensions		
					Height	Width	Depth
EXTRACTOR® & XTS™ Series							
CBS-2131XTS-3L/1G	F002	13 x 5"	500	5 lbs	13"	9"	9"
CBS-2132XTS-3L/1G							
CBS-2141XTS							
CBS-2142XTS							
CBS-2151XTS	F001	15 x 5 1/2"	500	8 lbs	19"	9"	9"
CBS-2152XTS							
CBS-2052e20							
CBS-2061e & CBS-2062e:							
Standard Brew Basket	F004	20 x 8"	500	12 lbs	20"	14"	14"
Half Batch Brew Basket (B00828003)	F005	18 x 7"	500	12 lbs	18"	14"	14"
5000 Series Brewing System							
CBS-51H-15, CBS-52H-15 & CBS-52H-20:							
Standard Brew Basket	F001	15 x 5 1/2"	500	8 lbs	19"	9"	9"
Half Batch Brew Basket (B004280B1)	F002	13 x 5"	500	5 lbs	13"	9"	9"
Iced Tea Brew Basket (B005110B1)	F002	13 x 5"	500	5 lbs	13"	9"	9"
6000 Series Brewing System							
CBS-61H & CBS-62H:							
Standard Brew Basket	F004	20 x 8"	500	12 lbs	20"	14"	14"
Half Batch Brew Basket (B00828003)	F005	18 x 7"	500	12 lbs	18"	14"	14"
7000 High Volume Series Brewing System							
ALL MODELS	F006	23 x 9"	500	18 lbs	20"	14"	14"

► WATER FILTRATION SYSTEM

Everpure® In-Line Water Filtration System

The Everpure® Water Filtration System includes almost everything you need to begin filtering water immediately for your new or existing equipment.

- 1ea. Commercial quality corrosion resistant filter head
- 1ea. Taste and Odor filter cartridge (FETCO® #A075)
- 1ea. 3/8" x 4' connection hose
- 1 set - Mounting bracket and hardware.

☀ Features & Benefits

- Recommended for large-sized operations
- Taste and odor filter for extremely turbid (cloudy) water
- Granular-activated carbon reduces chlorine taste and odor and other unwanted contaminants for clean and consistent taste
- Quick-disconnect style head/cartridge design make cartridge replacement virtually effortless
- Durable, corrosion-resistant head includes built-in shutoff valve for quick and easy maintenance



💧 Water Specification

SKU	Rated Capacity	Working Pressure
A039 / A075	30,000 gallons	10-125 psi [0.7-8.6 bar], non-shock

BWT bestmax In-Line Water Filtration System

The BWT bestmax Water Filtration System includes almost everything you need to begin filtering water immediately for your new or existing equipment.

- 1ea. Filter Cartridge
- 1ea. Universal filter head
- 1ea. Wall mounting bracket
- Braided hose supplies 3/8" and 3/4" compression, in 24" or 48" lengths

☀ Features & Benefits

- Recommended for small- to medium-sized operations
- High-capacity carbonate hardness removal prevents scale deposits while retaining essential minerals
- Granular-activated carbon reduces sediment and chlorine for clean and consistent taste
- Quick-disconnect style head/cartridge design makes cartridge replacement effortless
- Durable, corrosion-resistant head includes built-in shutoff valve for easy maintenance
- Four bypass settings allows for different water qualities and product preferences



💧 Water Specification

SKU	Rated Capacity	Working Pressure
A138 / A139	793 gallons	29-116 psi [2-8 bar], non-shock
A140 / A141	1,205 gallons	29-116 psi [2-8 bar], non-shock

► COFFEE BREWERS

Brew Baskets

Half Batch Brew Basket Assembly w/Black Handle for CBS-5000 Series Brewers (13" x 5" with .280 Drip Hole)	B004280B1
Half Batch Brew Basket for CBS-6000 Series Brewers (18" x 7")	B00828003
Iced Tea Brew Basket for CBS-5000 Series Brewers (13" x 5" with .110 Drip Hole)	B005110B1
Plastic Brew Basket with Brown Insert for CBS-2130 & 2140 Series XTS™ Touchscreen Brewers (13"dia. x 5"D)	B014218BN2
Plastic Brew Basket with Brown Insert for CBS-2150 Series XTS™ Touchscreen Brewers (16"dia. x 6"D)	B015280BN2
Stainless Steel Metal Brew Basket for CBS-2150 Series XTS™ Touchscreen Brewers (16"dia. x 6"D)	B001280B1
Stainless Steel Metal Brew Basket for CBS-2130 & 2140 Series XTS™ Touchscreen Brewers (13"dia. x 5"D)	B012218B1

Equipment Stands

Stainless Steel Countertop (CTR-71) for CBS-71A Single Station 6.0 Gallon Brewer	A019
Stainless Steel Countertop (CTR-72) for CBS-72A Twin Station 6.0 Gallon Brewer	A020

► TEA BREWER

Brew Baskets

Brew Basket for TBS-2121 Tea Brewer 15"[Dia.]x5.5"[D]. Includes 1ea. blue handle insert and 7pc. drip-out orifice set	B013000B2
7pc. Interchangeable Drip-Out Orifice Set for Iced Tea Brew Basket (B013000B2)	1023.00185.00

Dispenser Platforms and Shelving

Add-On Dispenser Platform with Guide Rails for ITD-2135 Dispensers: 7.5"x14.5"[WxD]	1102.00202.00
Universal Dispenser Platform with Flat Surface: 13"x14"[WxD]	1102.00205.00
Universal TBS Shelf for Airpots and L3S Servers	Z071

Product Identification

Color Handle Insert for Plastic Brew Basket – Blue	1023.00180.00
Color Handle Insert for Plastic Brew Basket – Red	1023.00190.00
Color Handle Insert for Plastic Brew Basket – Green	1023.00191.00
Color Handle Insert for Plastic Brew Basket – Orange	1023.00192.00

► THERMAL DISPENSERS

Hot Tea Infusers

Hot Tea Infuser for 3.0L Airpot (D041)	A112
Hot Tea Infuser for 1.0 and 1.5 Gallon L3D / L3S / TPD Dispensers	A113

Product Identification

Black Replacement Lid for 3.0L Airpot (D041)	71082
Orange Replacement Lid for 3.0L Airpot (D041)	71087
Orange Replacement Lid for 1.9L Tall Server (D037)	99022
Orange Replacement Lid for 1.9L Low Profile Server (D055)	99032
Recipe / Flavor ID Plates, Acrylic	A069

Racks / Merchandisers

2 Station Wire Merchandiser for Airpots (w/ Drip Trays)	A034
3 Station Wire Merchandiser for Airpots (w/ Drip Trays)	A035
5 Station Wire Merchandiser for Airpots (w/ Drip Trays)	A036

Serving Stations

Single Serving Station for L3S-10 (S3S-10-1)	A093
Single Serving Station for L3S-15 & L3S-20 (S3S-15/20-1)	A097
Twin Serving Station for L3S-10 (S3S-10-2)	A094
Twin Serving Station for L3S-15 & L3S-20 (S3S-15/20-2)	A098
Triple Serving Station for L3S-10 (S3S-10-3)	A096
Triple Serving Station for L3S-15 & L3S-20 (S3S-15/20-3)	A099
Serving Station for LBD-6 with Drip Tray	A018

Spout / Fill Adaptors

Gravity Fill Jug Hose for LBD-6C & LBD-18 High Volume Dispensers	A037
Gravity Fill Jug Hose for LBD-24 High Volume Dispensers	A078

Surface Protection

Freestanding Drip Tray – Square	A137
---------------------------------	-------------

► COFFEE GRINDERS

Replacement / Extra Hopper w/ Lid for GR2.2 & GR2.3	A066
"Brew Basket" Coffee Bean Scoop - 16" x 6"	A088
Hopper Storage Rack for GR 2.2 and GR 2.3	A118

► MARITIME

Bolt Down Dispenser Rings

Bolt Down Stationary Ring for TPD-15 Dispensers (MSR-15)	A029
Bolt Down Stationary Ring for TPD-30 Dispensers (MSR-30)	A031

COFFEE BREWERS

Power Management	
Add Step-Down Voltage Transformer	Z040
Upgrade Brewer For 3-Phase Electrical Power Systems	Z056
Conversion Packages	
Universal Wiring - Field Convertible from 1 to 3-Phase for CBS-52H-15 or CBS-52H-20	Z042
Universal Wiring - Field Convertible from 1 to 3-Phase for CBS-62H	Z043

THERMAL DISPENSERS

Replacement Faucet Handle*	
Orange Dispenser Faucet Replacement Handle	1071.00029.00
Green Dispenser Faucet Replacement Handle	1071.00031.00
Blue Dispenser Faucet Replacement Handle	1071.00032.00

*Color choice must be specified at time of purchase for no charge

Digital Display	
Rear Facing Positioned Digital Display (L3D / L3S Dispensers)	Z053

Thermal Dispenser Graphic "Wraps"	
Application Service for L3D & L3S Series Dispenser Wraps (ea.)	Z067
Application Service for TPD Series Dispenser Wraps (ea.)	Z044

L3D-10 / L3S-10 Series:	
Breaking Fresh Grounds™ Graphic	WRAP-058
Steeping Fresh Leaves™ Graphic	WRAP-060
Icing Fresh Coffee™ Graphic	WRAP-065

L3D-15 / L3S-15 Series:	
Plain Black Graphic	WRAP-049
Breaking Fresh Grounds™ Graphic	WRAP-059
Steeping Fresh Leaves™ Graphic	WRAP-061
Icing Fresh Coffee™ Graphic	WRAP-066

L3D-20 Series:	
Plain Black Graphic	WRAP-082

TPD-15 Series:	
Plain Black Graphic	WRAP-017

MARITIME

Dispenser Conversion Packages	
CBS-51H-15 Maritime Package for TPD-15 Only (Includes 2 x A029, Flanged Legs & Dispense Tube Funnel)	Z006
CBS-52H-15 Maritime Package for TPD-15 Only (Includes 4 x A029, Flanged Legs & Dispense Tube Funnel)	Z007
CBS-61H Maritime Package for TPD-30 Only (Includes 2 x A031, Flanged Legs & Dispense Tube Funnel)	Z014
CBS-62H Maritime Package for TPD-30 Only (Includes 4 x A031, Flanged Legs & Dispense Tube Funnel)	Z017

Dispenser Wrap Examples



L3S Series Servers with Wraps



L3D Series Dispensers with Wraps



▶ Terms of Sale

THIS PRICE LIST SUPERSEDES ALL PREVIOUS ISSUES.

ALL ORDERS SUBJECT TO APPROVAL AT THE CORPORATE OFFICE OF FETCO® IN LAKE ZURICH, ILLINOIS.

Terms and conditions prevailing at time of shipment.

TERMS: Net 30 days from date of invoice with approved credit. All shipments are FOB FETCO® factory. Minimum billing \$25. When ordering please specify model number and type of electrical needed. For custom orders consult FETCO® Sales Department. No returns will be accepted without prior authorization and return authorization number from Customer or Technical Service Departments. Returns must be shipped freight prepaid unless otherwise confirmed by FETCO®. If merchandise is lost or damaged in transit, purchaser must initiate a claim directly with carrier. Claims for shortages must be made within 10 days from receipt of goods. Claims on damaged goods should be made immediately. If your inspection shows damage, call your local representative of the freight carrier at once without further unpacking. File a report of concealed damage and file your claim with the carrier. The responsibility of carrier claims for damages remains with the purchaser. FETCO® reserves the right to discontinue any model at any time, change specifications and/or designs without incurring further obligation.

TERMS AND CONDITIONS TO THE ACKNOWLEDGMENT BY FOOD EQUIPMENT TECHNOLOGIES COMPANY, HEREIN AFTER CALLED FETCO®, OF THE BUYER'S PURCHASE ORDER.

1. The Buyer shall pay all taxes applicable to or connected with the transaction.
2. All shipping instructions must be in writing. FETCO® reserves the right to select the carrier. Any excess transportation charges incurred by the Buyer's selection of the carrier must be borne by the Buyer. All sales by FETCO® to the Buyer shall be FOB FETCO® plant in Lake Zurich, Illinois 60047. FETCO® shall invoice the Buyer, which shall pay FETCO® for each shipment on Net 30 day terms.
3. Title and risk pass to the Buyer when a shipment leaves the plant of FETCO®.
4. FETCO® shall not be liable for failure of performance due to labor difficulties, fires, floods, unavailability of materials, compliance with laws or governmental regulations, wars, or other casualties or causes beyond its control.
5. THERE ARE NO EXPRESS OR IMPLIED WARRANTIES, INCLUDING WARRANTIES AS TO MERCHANTABILITY OR FITNESS FOR A PARTICULAR PURPOSE.
Claims for shortages, damaged merchandise, or merchandise defective as to materials or workmanship shall be limited to a right of the Buyer to the replacement thereof, or, at the option of FETCO®, to a credit for the purchase price of the affected merchandise, excluding hereby any claim for incidental or consequential damage of any kind. Any claim shall be deemed waived if the Buyer fails:
 - a. to give written notice thereof to FETCO® within ten (10) days after delivery
 - b. to set aside said merchandise for examination by the carrier or FETCO®;
 - c. to cause the carrier to note an exception covering the alleged shortage or damage to merchandise at the time the delivery is accepted from the carrier; or
 - d. to make or give such demand, claim or notice to the carrier with respect to such shortages or damage as the Bill of Lading may require

6. The Buyer must first obtain written permission and shipping instructions from FETCO® before returning merchandise; otherwise, returned merchandise will be refused upon arrival and FETCO® will assume no responsibility therefor. Approved returns of merchandise found to be defective (subject to inspection by FETCO®), or merchandise shipped by FETCO® in error, will be accepted for full credit and FETCO® will also pay return freight charges. All approved returns must be received within 30 days of the return authorization date. All returns beyond 30 days will be refused and returned to company returning the product.
7. In the event that the Buyer breaches the contract formed by Buyer's Purchase Order and the Acknowledgment of FETCO®, the Buyer shall be obligated to pay all charges accrued to the date of breach, and, in addition to general damages, all expenses of enforcing the contract including reasonable attorneys fees.
8. Waiver of any breach of the contract shall not operate as a waiver of any future breach nor as a continuing waiver nor shall such waiver or any course of conduct operate as a modification or rescission of any of the terms contained herein.
9. If any provision hereof shall be held to contravene any applicable law, the contract shall be deemed reformed to the extent of conforming to said law and in all other respects the contract shall remain in full force and effect.
10. The contract represents the entire agreement between the parties with respect to the subject matter hereof and cannot be modified except in writing signed by an authorized representative of FETCO® and the Buyer. The rights and obligations of the parties shall be governed and construed according to the laws of the State of Illinois without regard to the choice of laws, rules, and the parties agree and consent to jurisdiction and venue for any dispute in the state or federal courts situated in Chicago, Illinois.

▶ Return Policies & Procedures

FETCO has separate return policies for equipment/accessories and new, unused replacement parts.
Please contact FETCO Customer Service (1-800-FETCO99) if you have any questions about return policies or procedures.

1. Equipment & Accessories

Equipment and accessories may be returned for credit or exchange within 61 days of original ship date. Returns for equipment and accessories are not accepted 61 days after ship date. All returns are inspected by a FETCO Quality Assurance Manager and credit is contingent upon final inspection.

All equipment and accessory returns for credit or exchange:

1. Must have a Return Authorization Number (RA#) from FETCO Customer Service – 1-800-FETCO99.
2. Must have the outer packaging and paperwork clearly marked with the return authorization number.
3. Must be returned pre-paid and insured.
4. Should be properly packed in original cartons and fillers to avoid damage.
(PLEASE NOTE: All credits and exchanges are contingent upon full inspection of returned merchandise. Returned merchandise damaged due to improper protective packaging or mishandling by the freight carrier are the responsibility of the sender).
5. Are subject to the following restocking fees:
 - 0% - If returned within 30 days of ship date.
 - 15% - If returned within 60 days of ship date.

2. New, Unused Replacement Parts

Replacement parts may be returned for credit only if they are in original packaging, in new and unused condition and are not obsolete. To verify if your replacement part is returnable, contact FETCO Technical Support with the following information for each replacement part you wish to return:

- FETCO part SKU number
- Invoice number
- Invoice date

Upon receipt of the information, A FETCO Technical Service specialist will determine which parts are returnable and issue a Return Authorization Number (RA#) for the merchandise. All returned parts are inspected by a FETCO Technical Service specialist and credit is contingent upon final inspection.

All replacement parts returned for credit or exchange:

1. Must have a Return Authorization Number (RA#) from FETCO Technical Service - 1.800.FETCO.99.
2. Must have the outer packaging and paperwork clearly marked with the return authorization number.
3. Must be returned pre-paid and insured.
4. Should be properly packed in original cartons and fillers to avoid damage. (PLEASE NOTE: All credits and exchanges are contingent upon full inspection of returned merchandise. Returned merchandise damaged due to improper protective packaging or mishandling by the freight carrier are the responsibility of the sender)
5. Are subject to the following restocking fees:
 - 0% - If returned within 30 days of ship date.
 - 15% - If returned within 60 days of ship date.
 - 30% - If returned 60 days after ship date.

3 ways to contact FETCO Technical Support:

-  1-800-338-2699
1-800-719-3000 (x 2385)
-  1-847-719-3001
-  techsupport@fetco.com



▶ Warranty Conditions & Service

Warranty for manufactured equipment purchased for installation in the U.S. and Canada is as follows:

- Circuit Boards – 3 years parts and 1 year labor
- Electro mechanical parts – 2 years parts and 1 year labor
- All other parts – 1 year parts and 1 year labor
- Accessories and Dispensers: 1 year parts only (airpot vacuum insulation – 1 year)
- Dispenser Funnels – 1 year

Warranty does not apply under the following conditions:

- Accident, neglect or abuse
- Improper installation. Equipment must be installed by a professional technician and must comply with all local electrical, mechanical and plumbing codes
- Relocation or reinstallation
- Any modification to equipment
- Failure to provide neutral to the electrical connection if the unit requires it
- Incorrect voltage applied to the unit at anytime
- Improper cleaning procedures
- Water conditions, including, but not limited to, excessive lime and chlorine
- Faucet seat cups, sight gauge tubes, and sight gauge washers are not covered
- All warranties are null and void if muriatic or any other form of hydrochloric acid is used for cleaning or deliming

Warranty covers all electrical parts, fittings and tubing, but does not cover installation, adjustments, training, preventative maintenance, cleaning, or improper operation / application.

Warranty service:

Service calls are limited to normal weekday business hours (no weekends or holidays). No more than 2 hours of travel time will be covered per round trip. Reconditioned circuit boards may be used for warranty replacements. Warranty can be denied if repairs are not made by a FETCO® recommended service agent. If the defective parts are not returned or if the parts are found by factory testing to be operational and functional, the warranty claim will be denied.

Warranty is effective and conditional on the following:

- FETCO® has received timely notification of the claim by phone: 1.800.338.2699, by email: techsupport@fetco.com or mail: FETCO®, 600 Rose Road, Lake Zurich, IL 60047 Attention: Director of Technical Support and;
- The item has been verified as under warranty and;
- A Return Authorization Number (RA) has been issued by FETCO® and;
- Pre-paid shipment of defective item(s) to FETCO®
- All defective parts must be replaced with genuine FETCO® parts.

The warranty period begins from the day of shipment from FETCO® and warrants that the equipment manufactured by FETCO® will be free from defect in material and craftsmanship existing at the time of manufacturing and appearing within the applicable warranty period.

The warranty does not apply to any equipment, component or part not manufactured by FETCO®. The warranty also does not apply to any equipment, components or parts manufactured by FETCO®, in FETCO's judgment, that has been affected by intentional or unintentional misuse, abuse, alteration, damage, casualty, improper installation or operation, improper maintenance, improper repair or extreme conditions.

The Buyer's resolution against FETCO® for the breach of any obligation resulting from the sale of equipment manufactured by FETCO® whether derived from warranty or otherwise shall be limited, at FETCO's sole discretion, as specified herein to repair, replace or refund.

In no circumstances shall FETCO® be liable for any other damages or loss, including, but not limited to, the following:

- Lost profits
- Lost sales
- Loss of use of equipment
- Expenses for removal or reinstallation
- Claims from the Buyer's customers
- Cost of capital
- Cost of downtime
- Cost of substitute equipment
- Facilities or services or any other special, incidental or consequential damages

Numerical Product Index By Category

Line# SKU# Description

Page#

COFFEE BREWING SYSTEMS

1	CBS-2131XTS-3L	XTS™ Single Station 3.0 Liter Coffee Brewer	5
2	CBS-2131XTS-1G	XTS™ Single Station 1.0 Gallon Coffee Brewer	7
3	CBS-2132XTS-3L	XTS™ Twin Station 3.0 Liter Coffee Brewer	6
4	CBS-2132XTS-1G	XTS™ Twin Station 1.0 Gallon Coffee Brewer	8
5	CBS-2141XTS	XTS™ Single Station 1.0 Gallon Coffee Brewer	9
6	CBS-2142XTS	XTS™ Twin Station 1.0 Gallon Coffee Brewer	10
7	CBS-2151XTS	XTS™ Single Station 1.5 Gallon Coffee Brewer	11
8	CBS-2152XTS	XTS™ Twin Station 1.5 Gallon Coffee Brewer	12
9	CBS-2052e20	EXTRACTOR® Twin Station 2.0 Gallon Coffee Brewer	13
10	CBS-2061e	EXTRACTOR® Single Station 3.0 Gallon Coffee Brewer	14
11	CBS-2062e	EXTRACTOR® Twin Station 3.0 Gallon Coffee Brewer	15
12	CBS-51H-15	Handle Operated, Single Station 1.5 Gallon Coffee Brewer	20
13	CBS-52H-15	Handle Operated, Twin Station 1.5 Gallon Coffee Brewer	21
14	CBS-52H-20	Handle Operated, Twin Station 2.0 Gallon Coffee Brewer	22
15	CBS-61H	Handle Operated, Single Station 3.0 Gallon Coffee Brewer	23
16	CBS-62H	Handle Operated, Twin Station 3.0 Gallon Coffee Brewer	24
17	CBS-71A	High Volume, Single Station 6.0 Gallon Countertop Coffee Brewer	26
18	CBS-71AC	High Volume, Single Station 6.0 Gallon Mobile Coffee Brewer	28
19	CBS-72A	High Volume, Twin Station 6.0 Gallon Countertop Coffee Brewer	27
20	CBS-72AC	High Volume, Twin Station 6.0 Gallon Mobile Coffee Brewer	29
21	IP44-52H-15	Maritime Series, Twin Station Handle Operated 1.5 Gallon Coffee Brewer	31
22	IP44-52H-20	Maritime Series, Twin Station Handle Operated 2.0 Gallon Coffee Brewer	32
23	IP44-62H-30	Maritime Series, Twin Station Handle Operated 3.0 Gallon Coffee Brewer	33

TEA BREWING SYSTEMS

24	TBS-2121	Twin Station 3.5 Gallon Iced Tea Brewer	18
----	----------	---	----

HOT WATER DISPENSERS

25	HWB-2105	5.0 Gallon All Stainless Touchscreen Hot Water Dispenser	39
26	HWB-2110	10.0 Gallon All Stainless Touchscreen Hot Water Dispenser	39
27	HWB-15	15.0 Gallon All Stainless Hot Water Dispenser	40
28	HWB-25	25.0 Gallon All Stainless Hot Water Dispenser	40
29	HWD-2102	2.0 Gallon Touch Operated Sinlge Temp Hot Water Dispenser	37
30	HWD-2105	5.0 Gallon Touch Operated Sinlge Temp Hot Water Dispenser	37
31	HWD-2105TOD	5.0 Gallon Touch Operated [Temperature On Demand] Hot Water Dispenser	38
32	HWD-2110	10.0 Gallon Touch Operated Sinlge Temp Hot Water Dispenser	37
33	HWD-2110TOD	10.0 Gallon Touch Operated [Temperature On Demand] Hot Water Dispenser	38
34	IP44 HWB-5	5.0 Gallon All Stainless Hot Water Dispenser (IP44)	34
35	IP44 HWB-10	10.0 Gallon All Stainless Hot Water Dispenser (IP44)	34

COFFEE GRINDERS

36	GR 1.2	Coffee Grinder - Single Hopper with 2 Batch Size Capability	42
37	GR 1.3	Coffee Grinder - Single Hopper with 3 Batch Size Capability	42
38	GR 2.2	Coffee Grinder - Dual Hopper with 4 Batch Size Capability	42
39	GR 2.3	Coffee Grinder - Dual Hopper with 6 Batch Size Capability	42

THERMAL DISPENSERS

40	1.9L Low Profile	1.9L Low Profile Tabletop Server	44
41	1.9L Pitcher	1.9L Tall Tabletop Server	44
42	3.0L Airpot	3.0L Vacuum Airpot	44
43	1.0G Airpot	1.0G Vacuum Airpot	44
44	ITD-2135	3.5 Gallon Iced Tea Dispenser	47
45	L3D-10	1.0 Gallon LUXUS® Thermal Dispenser	46
46	L3D-15	1.5 Gallon LUXUS® Thermal Dispenser	46
47	L3D-20	2.0 Gallon LUXUS® Thermal Dispenser	46
48	L3S-10	1.0 Gallon LUXUS® Thermal Server	45
49	L3S-15	1.5 Gallon LUXUS® Thermal Server	45
50	L3S-20	2.0 Gallon LUXUS® Thermal Server	45
51	LBD-6	6.0 Gallon LUXUS® Thermal Dispenser	48
52	LBD-6C	6.0 Gallon LUXUS® Thermal Dispenser	48
53	LBD-18	18.0 Gallon LUXUS® Thermal Dispenser	48
54	LBD-24	24.0 Gallon LUXUS® Thermal Dispenser	48
55	TPD-15	1.5 Gallon LUXUS® Thermal Dispenser	47
56	TPD-30	3.0 Gallon LUXUS® Thermal Dispenser	47

Numerical Product Index By Category

Line# SKU# Description Page#

▶ ACCESSORIES

57	71082	Black Replacement Lid for 3.0L Airpot (D041)	51
58	71087	Orange Replacement Lid for 3.0L Airpot (D041)	51
59	99022	Orange Replacement Lid for 1.9L Tall Server (D037)	51
60	99032	Orange Replacement Lid for 1.9L Low Profile Server (D055)	51
61	A018	Serving Station for LBD-6 with Drip Tray	51
62	A019	Stainless Steel Countertop (CTR-71) for CBS-71A Single Station 6 Gallon Brewer	51
63	A020	Stainless Steel Countertop (CTR-72) for CBS-72A Twin Station 6 Gallon Brewer	51
64	A029	Bolt Down Stationary Ring for TPD-15 Dispensers (MSR-15)	51
65	A031	Bolt Down Stationary Ring for TPD-30 Dispensers (MSR-30)	51
66	A034	2 Station Wire Merchandiser for Airpots (w/ Drip Trays)	51
67	A035	3 Station Wire Merchandiser for Airpots (w/ Drip Trays)	51
68	A036	5 Station Wire Merchandiser for Airpots (w/ Drip Trays)	51
69	A037	Gravity Jug Fill Hose for LBD-6C & LBD-18 High Volume Dispensers	51
70	A039	Everpure® In-Line Water Filtration System (Includes filter head, connector hose, cartridge and mounting hardware)	50
71	A066	Replacement / Extra Hopper w/ lid for GR2.2 & GR2.3	51
72	A069	Recipe / Flavor ID Plates, Acrylic	51
73	A075	Replacement Cartridge for Everpure® In-Line Water Filtration System	50
74	A078	Gravity Jug Fill Hose for LBD-24 High Volume Dispensers	51
75	A088	Brew Basket Scoop - 16" x 6"	51
76	A093	Single Serving Station for L3S-10 (S3S-10-1)	51
77	A094	Twin Serving Station for L3S-10 (S3S-10-2)	51
78	A096	Triple Serving Station for L3S-10 (S3S-10-3)	51
79	A097	Single Serving Station for L3S-15 & L3S-20 (S3S-15/20-1)	51
80	A098	Twin Serving Station for L3S-15 & L3S-20 (S3S-15/20-2)	51
81	A099	Triple Serving Station for L3S-15 & L3S-20 (S3S-15/20-3)	51
82	A112	Hot Tea Infuser for 3.0L Airpot (D041)	51
83	A113	Hot Tea Infuser for 1.0 and 1.5 Gallon LD / L3D / L3S / TPD Dispensers	51
84	A118	Hopper Storage Rack for GR 2.2 and GR 2.3	51
85	A137	Freestanding Drip Tray - Square	51
86	A138	BWT bestmax V In-Line Water Filtration System (includes filter head, connector hose, cartridge and mounting hardware)	50
87	A139	Replacement Water Filter Cartridge for BWT bestmax V In-Line Water Filtration System	50
88	A140	BWT bestmax M In-Line Water Filtration System (includes filter head, connector hose, cartridge and mounting hardware)	50
89	A141	Replacement Water Filter Cartridge for BWT bestmax M In-Line Water Filtration System	50
90	B013000B2	Brew Basket for TBS-2121 Iced Tea Brewer 15"[Dia.]x5.5"[D]. Includes 1ea. blue handle insert and 7pc. drip-out orifice set	51
91	1102.00202.00	Add-On Dispenser Platform with Guide Rails for ITD-2135 Dispensers: 7.5"x14.5"[WxD]	51
92	1102.00205.00	Universal Dispenser Platform with Flat Surface: 13"x14"[WxD]	51
93	1023.00185.00	7pc. Interchangeable Drip-Out Orifice Set for Iced Tea Brew Basket (B013000B2)	51
94	1023.00180.00	Color Handle Insert for Plastic Brew Basket – Blue	51
95	1023.00190.00	Color Handle Insert for Plastic Brew Basket – Red	51
96	1023.00191.00	Color Handle Insert for Plastic Brew Basket – Green	51
97	1023.00192.00	Color Handle Insert for Plastic Brew Basket – Orange	51
98	F001	Paper Coffee Filter - 15" x 5 1/2" (500/case)	50
99	F002	Paper Coffee Filter - 13" x 5" (500/case)	50
100	F003	Paper Coffee Filter - 9 3/4" x 4 1/2" (1000/case)"	50
101	F004	Paper Coffee Filter - 20" x 8" (500/case)	50
102	F005	Paper Coffee Filter - 18" x 7" (500/case)	50
103	F006	Paper Coffee Filter - 23" x 9" (500/case)	50
104	F007	Paper Coffee Filter - 11 1/4" x 3 3/4" (500/case)	50
105	Z071	Universal TBS Shelf and Brew Basket Kit (includes shelf and mounting hardware)	51

▶ OPTIONS

106	1071.00029.00	Orange Dispenser Faucet Replacement Handle	52
107	1071.00031.00	Green Dispenser Faucet Replacement Handle	52
108	1071.00032.00	Blue Dispenser Faucet Replacement Handle	52
109	WRAP-017	Plain Black Graphic (TPD-15 Series)	52
110	WRAP-049	Plain Black Graphic (L3D-15 / L3S-15 Server Series)	52
111	WRAP-058	Breaking Fresh Grounds™ Graphic (For L3D-10 / L3S-10 Server Series)	52
112	WRAP-059	Breaking Fresh Grounds™ Graphic (L3D-15 / L3S-15 Server Series)	52
113	WRAP-060	Steeping Fresh Leaves™ Graphic (For L3D-10 / L3S-10 Server Series)	52
114	WRAP-061	Steeping Fresh Leaves™ Graphic (L3D-15 / L3S-15 Server Series)	52
115	WRAP-065	Icing Fresh Coffee™ Graphic (For L3D-10 / L3S-10 Server Series)	52
116	WRAP-066	Icing Fresh Coffee™ Graphic (L3D-15 / L3S-15 Server Series)	52
117	WRAP-082	Plain Black Graphic (L3D-20 Series)	52
118	Z006	CBS-51H-15 Maritime Package for TPD-15 Only (Includes 2 x A029, Flanged Legs & Dispense Tube Funnel)	52
119	Z007	CBS-52H-15 Maritime Package for TPD-15 Only (Includes 4 x A029, Flanged Legs & Dispense Tube Funnel)	52
120	Z014	CBS-61H Maritime Package for TPD-30 Only (Includes 2 x A031, Flanged Legs & Dispense Tube Funnel)	52
121	Z017	CBS-62H Maritime Package for TPD-30 Only (Includes 4 x A031, Flanged Legs & Dispense Tube Funnel)	52
122	Z028	Iced Tea Brew Package for 5000 Series Brewers (Dispenser, Brew Basket & Controls)	52
123	Z040	Add Step-Down Voltage Transformer	52
124	Z042	Universal Wiring - Field Convertible from 1 to 3-Phase for CBS-52H-15 or CBS-52H-20	52
125	Z043	Universal Wiring - Field Convertible from 1 to 3-Phase for CBS-62H	52
126	Z044	Application Service Charge Only for TPD Series Dispenser Wraps (ea.)	52
127	Z053	Rear Facing Positioned Digital Display (L3D / L3S Dispensers)	52
128	Z056	Upgrade Brewer For 3-Phase Electrical Power Systems	52
129	Z067	Application Service Charge Only for L3D & L3S Series Dispenser Wraps (ea.)	52

